

LSP1 Rabbit monoclonal antibody

Catalog: BS40204

Host: Rabbit

Reactivity: Human Mouse Rat

BackGround:

LSP1 is a 52 kDa leukocyte-specific protein expressed in B cells, T cells, macrophages and neutrophils. The protein binds F-actin through its C-terminal actin-binding repeat and regulates cytoskeletal-related cellular movement such as polarization, chemotaxis and locomotion. LSP1 is a phospho-protein and has been identified as a major substrate of MAP kinase and PKC in lymphocytes and neutrophils.

Product:

Rabbit IgG, 1mg/ml in PBS with 0.02% sodium azide, 50% glycerol, pH7.2.

Molecular Weight:

52kDa

Swiss-Prot:

P33241

Purification&Purity:

Affinity-chromatography

Applications:

WB 1:1000~1:2000 IHC 1:50~1:200 ICC/IF 1:50~1:200

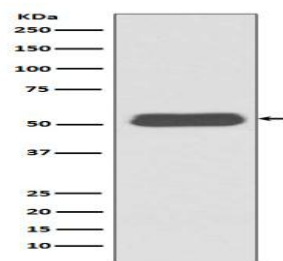
Storage&Stability:

Store at 4 °C short term. Aliquot and store at -20 °C long term. Avoid freeze-thaw cycles.

Specificity:

LSP1 Antibody detects endogenous levels of LSP1

DATA:



Western blot analysis of LSP1 expression in Ramos cell lysate.

Note:

For research use only, not for use in diagnostic procedure.

Bioworld Technology, Inc.

Add: 1660 South Highway 100, Suite 500 St. Louis Park, MN 55416, USA.

Email: info@bioworld.com

Tel: 6123263284

Fax: 6122933841

Bioworld technology, co. Ltd.

Add: No 9, weidi road Qixia District Nanjing, 210046, P. R. China.

Email: info@biogol.com

Tel: 0086-025-68037686

Fax: 0086-025-68035151