

Myoglobin Rabbit monoclonal antibody

Catalog: BS40197

Host: Rabbit

Reactivity: Human Mouse Rat

BackGround:

Myoglobin (MB) is an oxygen-binding protein that contains one polypeptide chain and one heme group. Reversible oxygen binding occurs by a linkage with the imidazole nitrogen of the 91st histidine residue in the myoglobin chain. Research studies indicate that the blockade of myoglobin in isolated cardiac myocytes mimics hypoxia when electrically stimulated for paced contractions. During fetal development, myoglobin is required to support cardiac function.

Product:

Rabbit IgG, 1mg/ml in PBS with 0.02% sodium azide, 50% glycerol, pH7.2.

Molecular Weight:

17kDa

Swiss-Prot:

P02144

Purification&Purity:

Affinity-chromatography

Applications:

WB 1:500~1:2000 IHC 1:50~1:200 ICC/IF 1:50~1:200
IP 1:30

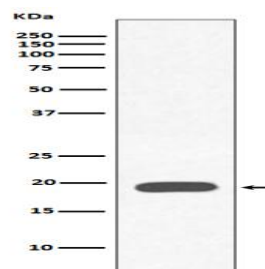
Storage&Stability:

Store at 4 °C short term. Aliquot and store at -20 °C long term. Avoid freeze-thaw cycles.

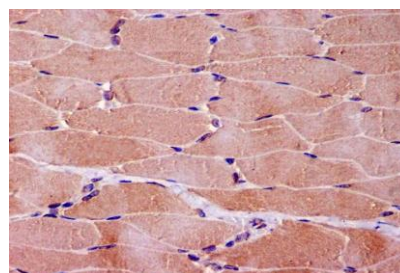
Specificity:

Myoglobin Antibody detects endogenous levels of Myoglobin

DATA:



Western blot analysis of Myoglobin expression in Human heart muscle lysate.



Immunohistochemical analysis of paraffin-embedded human skeletal muscle, using Myoglobin Antibody.

Note:

For research use only, not for use in diagnostic procedure.

Bioworld Technology, Inc.

Add: 1660 South Highway 100, Suite 500 St. Louis Park, MN 55416, USA.

Email: info@bioworld.com

Tel: 6123263284

Fax: 6122933841

Bioworld technology, co. Ltd.

Add: No 9, weidi road Qixia District Nanjing, 210046, P. R. China.

Email: info@biogot.com

Tel: 0086-025-68037686

Fax: 0086-025-68035151