

ERR alpha Rabbit monoclonal antibody

Catalog: BS40192

Host: Rabbit

Reactivity: Human Mouse Rat

BackGround:

Estrogen-related receptor alpha (ERR α /NR3B1) is an orphan nuclear receptor that controls transcription of genes involved in fatty acid oxidation, glucose metabolism, and mitochondrial biogenesis. The receptor protein contains a non-conserved amino terminal domain (NTD), a central zinc finger DNA binding domain, and a ligand-binding domain. The carboxy-terminal AF2 helix motif of ERR α contains binding sites for nuclear receptor coactivators PGC-1 α and PGC-1 β . Research studies demonstrate that ERR α transcriptional activity is regulated through phosphorylation and sumoylation within the NTD.

Product:

Rabbit IgG, 1mg/ml in PBS with 0.02% sodium azide, 50% glycerol, pH7.2.

Molecular Weight:

50kDa

Swiss-Prot:

P11474

Purification&Purity:

Affinity-chromatography

Applications:

WB 1:1000~1:2000 IP 1:50 FC 1:20

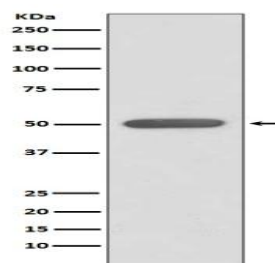
Storage&Stability:

Store at 4 °C short term. Aliquot and store at -20 °C long term. Avoid freeze-thaw cycles.

Specificity:

ERR alpha Antibody detects endogenous levels of ERR alpha

DATA:



Western blot analysis of ERR alpha expression in HeLa cell lysate.

Note:

For research use only, not for use in diagnostic procedure.

Bioworld Technology, Inc.

Add: 1660 South Highway 100, Suite 500 St. Louis Park, MN 55416, USA.

Email: info@bioworld.com

Tel: 6123263284

Fax: 6122933841

Bioworld technology, co. Ltd.

Add: No 9, weidi road Qixia District Nanjing, 210046, P. R. China.

Email: info@biogol.com

Tel: 0086-025-68037686

Fax: 0086-025-68035151