

## SGK1 Rabbit monoclonal antibody

Catalog: BS40191

Host: Rabbit

Reactivity: Human Mouse Rat

### BackGround:

Serum and glucocorticoid-inducible kinase (SGK) is a serine/threonine kinase closely related to Akt. SGK is rapidly induced in response to a variety of stimuli, including serum, glucocorticoid, follicle stimulating hormone, osmotic shock, and mineralocorticoids. SGK activation can be accomplished via HGF PI3K-dependent pathways and by integrin-mediated PI3K-independent pathways. Induction and activation of SGK has been implicated in activating the modulation of anti-apoptotic and cell cycle regulation.

### Product:

Rabbit IgG, 1mg/ml in PBS with 0.02% sodium azide, 50% glycerol, pH7.2.

### Molecular Weight:

57kDa

### Swiss-Prot:

O00141

### Purification&Purity:

Affinity-chromatography

### Applications:

WB 1:500~1:1000 IHC 1:50~1:200 IP 1:50 FC 1:30

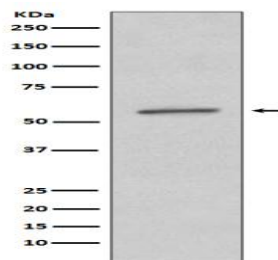
### Storage&Stability:

Store at 4 °C short term. Aliquot and store at -20 °C long term. Avoid freeze-thaw cycles.

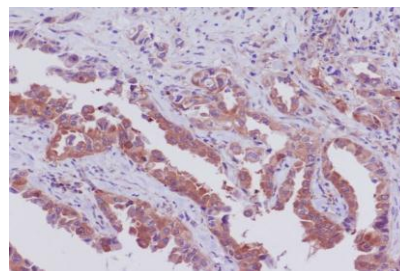
### Specificity:

SGK1 Antibody detects endogenous levels of SGK1

### DATA:



Western blot analysis of SGK1 expression in A431 cell lysate.



Immunohistochemical analysis of paraffin-embedded human lung cancer, using SGK1 Antibody.

### Note:

For research use only, not for use in diagnostic procedure.

### Bioworld Technology, Inc.

Add: 1660 South Highway 100, Suite 500 St. Louis Park, MN 55416, USA.

Email: [info@bioworld.com](mailto:info@bioworld.com)

Tel: 6123263284

Fax: 6122933841

### Bioworld technology, co. Ltd.

Add: No 9, weidi road Qixia District Nanjing, 210046, P. R. China.

Email: [info@biogot.com](mailto:info@biogot.com)

Tel: 0086-025-68037686

Fax: 0086-025-68035151