

## Dysferlin Rabbit monoclonal antibody

Catalog: BS40183

Host: Rabbit

Reactivity: Human Mouse

### BackGround:

Dysferlin Key calcium ion sensor involved in the  $\text{Ca}^{2+}$ -triggered synaptic vesicle-plasma membrane fusion. Plays a role in the sarcolemma repair mechanism of both skeletal muscle and cardiomyocytes that permits rapid resealing of membranes disrupted by mechanical stress. Belongs to the ferlin family. Interacts with CACNA1S. Interacts with ANXA1; the interaction is  $\text{Ca}^{2+}$ - and injury state-dependent.

### Product:

Rabbit IgG, 1mg/ml in PBS with 0.02% sodium azide, 50% glycerol, pH7.2.

### Molecular Weight:

280kDa

### Swiss-Prot:

O75923

### Purification&Purity:

Affinity-chromatography

### Applications:

WB 1:500~1:1000 IHC 1:50~1:200 ICC/IF 1:50~1:200

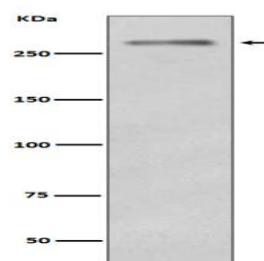
### Storage&Stability:

Store at 4 °C short term. Aliquot and store at -20 °C long term. Avoid freeze-thaw cycles.

### Specificity:

Dysferlin Antibody detects endogenous levels of Dysferlin

### DATA:



Western blot analysis of Dysferlin expression in Mouse skeletal muscle tissue lysate.

### Note:

For research use only, not for use in diagnostic procedure.

### Bioworld Technology, Inc.

Add: 1660 South Highway 100, Suite 500 St. Louis Park, MN 55416, USA.

Email: [info@bioworld.com](mailto:info@bioworld.com)

Tel: 6123263284

Fax: 6122933841

### Bioworld technology, co. Ltd.

Add: No 9, weidi road Qixia District Nanjing, 210046, P. R. China.

Email: [info@biogol.com](mailto:info@biogol.com)

Tel: 0086-025-68037686

Fax: 0086-025-68035151