

Lin28B Rabbit monoclonal antibody

Catalog: BS40168

Host: Rabbit

Reactivity: Human

BackGround:

It has recently been shown that upregulation of LIN28A and LIN28B in primary human tumors and human cancer cell lines is correlated with downregulation of let-7 miRNAs. LIN28 genes are reported to be involved in primordial germ cell development and germ cell malignancy. In addition, allelic variation in LIN28B is associated with regulating the timing of puberty in humans.

Product:

Rabbit IgG, 1mg/ml in PBS with 0.02% sodium azide, 50% glycerol, pH7.2.

Molecular Weight:

30kDa

Swiss-Prot:

Q6ZN17

Purification&Purity:

Affinity-chromatography

Applications:

WB 1:500~1:2000 ICC/IF 1:100~1:500 IP 1:50 FC 1:100

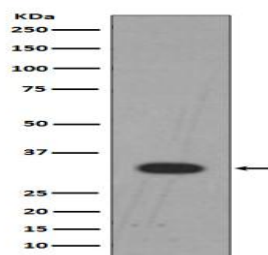
Storage&Stability:

Store at 4 °C short term. Aliquot and store at -20 °C long term. Avoid freeze-thaw cycles.

Specificity:

Lin28B Antibody detects endogenous levels of total Lin28B

DATA:



Western blot analysis of Lin28B expression in K562 cell lysate.



Immunofluorescent analysis of MCF-7 cells, using Lin28B Antibody .

Note:

For research use only, not for use in diagnostic procedure.

Bioworld Technology, Inc.

Add: 1660 South Highway 100, Suite 500 St. Louis Park, MN 55416, USA.

Email: info@bioworld.com

Tel: 6123263284

Fax: 6122933841

Bioworld technology, co. Ltd.

Add: No 9, weidi road Qixia District Nanjing, 210046, P. R. China.

Email: info@biogot.com

Tel: 0086-025-68037686

Fax: 0086-025-68035151