

## Alas1 Rabbit monoclonal antibody

Catalog: BS40167

Host: Rabbit

Reactivity: Human

### BackGround:

5-aminolevulinate synthase 1 (ALAS-H) and 2 (ALAS-E) are two isoforms of ALAS, an enzyme catalyzing the first step of the heme biosynthetic pathway in mammals. The erythroid-specific isoenzyme, ALAS-E, regulates the first step of hematopoietic cell differentiation and iron metabolism in the liver. ALAS-H is a housekeeping protein which mediates synthesis of early heme in the mitochondria of most cells.

### Product:

Rabbit IgG, 1mg/ml in PBS with 0.02% sodium azide, 50% glycerol, pH7.2.

### Molecular Weight:

71kDa

### Swiss-Prot:

P13196

### Purification&Purity:

Affinity-chromatography

### Applications:

WB 1:500~1:2000 ICC/IF 1:50~1:200

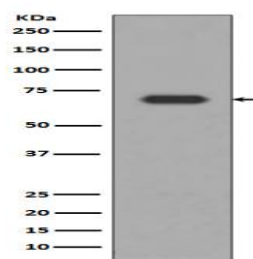
### Storage&Stability:

Store at 4 °C short term. Aliquot and store at -20 °C long term. Avoid freeze-thaw cycles.

### Specificity:

Alas1 Antibody detects endogenous levels of total Alas1

### DATA:



Western blot analysis of Alas1 expression in HepG2 cell lysate.

### Note:

For research use only, not for use in diagnostic procedure.

### Bioworld Technology, Inc.

Add: 1660 South Highway 100, Suite 500 St. Louis Park, MN 55416, USA.

Email: [info@bioworld.com](mailto:info@bioworld.com)

Tel: 6123263284

Fax: 6122933841

### Bioworld technology, co. Ltd.

Add: No 9, weidi road Qixia District Nanjing, 210046, P. R. China.

Email: [info@biogot.com](mailto:info@biogot.com)

Tel: 0086-025-68037686

Fax: 0086-025-68035151