

## M6PR Rabbit monoclonal antibody

Catalog: BS40163

Host: Rabbit

Reactivity: Human Mouse Rat

### BackGround:

Transport of phosphorylated lysosomal enzymes from the Golgi complex and the cell surface to lysosomes. Lysosomal enzymes bearing phosphomannosyl residues bind specifically to mannose-6-phosphate receptors in the Golgi apparatus and the resulting receptor-ligand complex is transported to an acidic prelysosomal compartment where the low pH mediates the dissociation of the complex. This receptor also binds IGF2. Acts as a positive regulator of T-cell coactivation, by binding DPP4.

### Product:

Rabbit IgG, 1mg/ml in PBS with 0.02% sodium azide, 50% glycerol, pH7.2.

### Molecular Weight:

274kDa

### Swiss-Prot:

P11717

### Purification&Purity:

Affinity-chromatography

### Applications:

WB 1:5000~1:20000 IHC 1:50~1:200 ICC/IF 1:50~1:200  
IP 1:30 FC 1:100

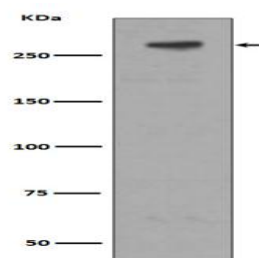
### Storage&Stability:

Store at 4 °C short term. Aliquot and store at -20 °C long term. Avoid freeze-thaw cycles.

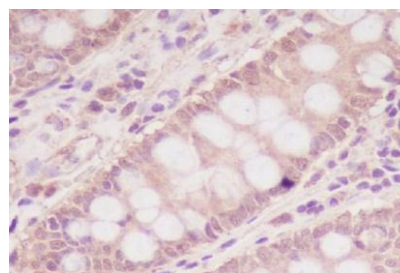
### Specificity:

M6PR Antibody detects endogenous levels of total M6PR

### DATA:



Western blot analysis of extracts of M6PR expression in Jurkat cell lysate.



Immunohistochemical analysis of paraffin-embedded human colon, using M6PR Antibody.

### Note:

For research use only, not for use in diagnostic procedure.

### Bioworld Technology, Inc.

Add: 1660 South Highway 100, Suite 500 St. Louis Park, MN 55416, USA.

Email: [info@bioworld.com](mailto:info@bioworld.com)

Tel: 6123263284

Fax: 6122933841

### Bioworld technology, co. Ltd.

Add: No 9, weidi road Qixia District Nanjing, 210046, P. R. China.

Email: [info@biogot.com](mailto:info@biogot.com)

Tel: 0086-025-68037686

Fax: 0086-025-68035151