

## PI 3 Kinase p55 gamma Rabbit monoclonal antibody

Catalog: BS40160

Host: Rabbit

Reactivity: Human Mouse Rat

### BackGround:

Binds to activated (phosphorylated) protein-tyrosine kinases through its SH2 domain and regulates their kinase activity. During insulin stimulation, it also binds to IRS-1. Highest levels in brain and testis. Lower levels in adipose tissue, kidney, heart, lung and skeletal muscle.

### Product:

Rabbit IgG, 1mg/ml in PBS with 0.02% sodium azide, 50% glycerol, pH7.2.

### Molecular Weight:

54kDa

### Swiss-Prot:

Q92569

### Purification&Purity:

Affinity-chromatography

### Applications:

WB 1:500~1:1000 IHC 1:50~1:200 ICC/IF 1:50~1:200

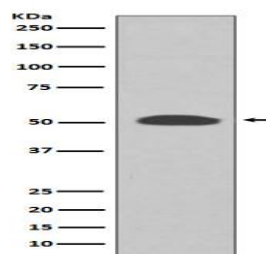
### Storage&Stability:

Store at 4 °C short term. Aliquot and store at -20 °C long term. Avoid freeze-thaw cycles.

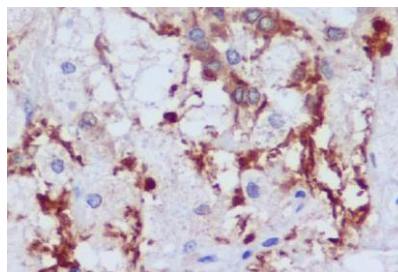
### Specificity:

PI 3 Kinase p55 gamma Antibody detects endogenous levels of total PI 3 Kinase p55 gamma

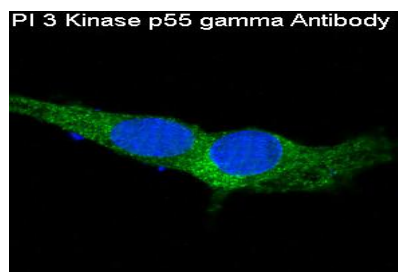
### DATA:



Western blot analysis of PI 3 Kinase p55 gamma expression in SH-SY5Y cell lysate.



Immunohistochemical analysis of paraffin-embedded human astrocytoma, using PI 3 Kinase p55 gamma Antibody.



Immunofluorescent analysis of C6 cells, using PI 3 Kinase p55 gamma Antibody .

### Note:

For research use only, not for use in diagnostic procedure.

### Bioworld Technology, Inc.

Add: 1660 South Highway 100, Suite 500 St. Louis Park, MN 55416, USA.

Email: [info@bioworld.com](mailto:info@bioworld.com)

Tel: 6123263284

Fax: 6122933841

### Bioworld technology, co. Ltd.

Add: No 9, weidi road Qixia District Nanjing, 210046, P. R. China.

Email: [info@biogot.com](mailto:info@biogot.com)

Tel: 0086-025-68037686

Fax: 0086-025-68035151