

Survivin Rabbit monoclonal antibody

Catalog: BS40154

Host: Rabbit

Reactivity: Mouse Rat

BackGround:

Acts as an important regulator of the localization of this complex; directs CPC movement to different locations from the inner centromere during prometaphase to mid-body during cytokinesis and participates in the organization of the center spindle by associating with polymerized microtubules. The complex with RAN plays a role in mitotic spindle formation by serving as a physical scaffold to help deliver the RAN effector molecule TPX2 to microtubules.

Product:

Rabbit IgG, 1mg/ml in PBS with 0.02% sodium azide, 50% glycerol, pH7.2.

Molecular Weight:

16kDa

Swiss-Prot:

O70201(mouse)

Purification&Purity:

Affinity-chromatography

Applications:

WB 1:500~1:2000 IHC 1:50~1:200 IP 1:30

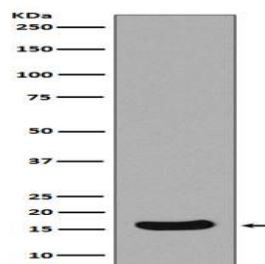
Storage&Stability:

Store at 4 °C short term. Aliquot and store at -20 °C long term. Avoid freeze-thaw cycles.

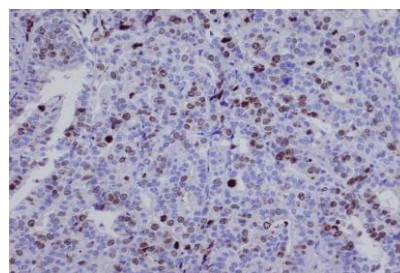
Specificity:

Survivin Antibody detects endogenous levels of total Survivin

DATA:



Western blot analysis of Survivin expression in Neuro-2a cell lysate.



Immunohistochemical analysis of paraffin-embedded mouse ovarian cancer, using Survivin Antibody.

Note:

For research use only, not for use in diagnostic procedure.

Bioworld Technology, Inc.

Add: 1660 South Highway 100, Suite 500 St. Louis Park, MN 55416, USA.

Email: info@bioworld.com

Tel: 6123263284

Fax: 6122933841

Bioworld technology, co. Ltd.

Add: No 9, weidi road Qixia District Nanjing, 210046, P. R. China.

Email: info@biogot.com

Tel: 0086-025-68037686

Fax: 0086-025-68035151