

Caspase-2 Rabbit monoclonal antibody

Catalog: BS40153

Host: Rabbit

Reactivity: Human Mouse Rat

BackGround:

Caspase-2 (Nedd2, ICH-1) is an aspartate-specific cysteine protease that is activated in response to various apoptotic stimuli. Caspase-2 is unique among the caspases in that it has features of both upstream caspases (long pro-domain) and downstream caspases (DEXD substrate specificity). Caspase-2 is highly expressed in the brain during development and is expressed at low levels in adult tissue.

Product:

Rabbit IgG, 1mg/ml in PBS with 0.02% sodium azide, 50% glycerol, pH7.2.

Molecular Weight:

48,30,12kDa

Swiss-Prot:

P42575

Purification&Purity:

Affinity-chromatography

Applications:

WB 1:500~2000 IHC 50~200 ICC/IF 50~200

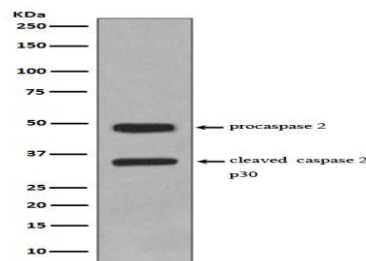
Storage&Stability:

Store at 4 °C short term. Aliquot and store at -20 °C long term. Avoid freeze-thaw cycles.

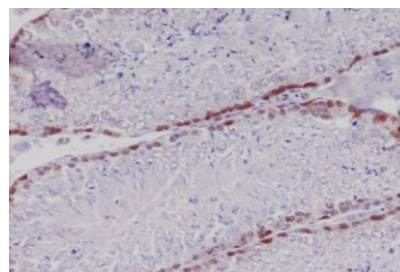
Specificity:

Caspase-2 Antibody detects endogenous levels of total Caspase-2

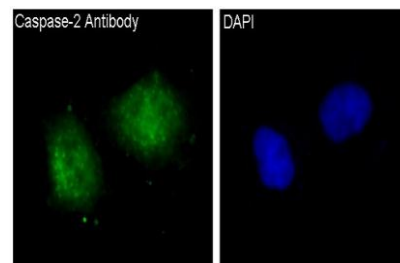
DATA:



Western blot analysis of Caspase-2 expression in Jurkat cell lysate.



Immunohistochemical analysis of paraffin-embedded mouse testis, using Caspase-2 Antibody.



Immunofluorescent analysis of HeLa cells, using Caspase-2 Antibody.

Note:

For research use only, not for use in diagnostic procedure.

Bioworld Technology, Inc.

Add: 1660 South Highway 100, Suite 500 St. Louis Park, MN 55416, USA.

Email: info@bioworld.com

Tel: 6123263284

Fax: 6122933841

Bioworld technology, co. Ltd.

Add: No 9, weidi road Qixia District Nanjing, 210046, P. R. China.

Email: info@biogot.com

Tel: 0086-025-68037686

Fax: 0086-025-68035151