

Stathmin 1 Rabbit monoclonal antibody

Catalog: BS40141

Host: Rabbit

Reactivity: Human Mouse Rat

BackGround:

Involved in the regulation of the microtubule (MT) filament system by destabilizing microtubules. Prevents assembly and promotes disassembly of microtubules. Phosphorylation at Ser-16 may be required for axon formation during neurogenesis. Involved in the control of the learned and innate fear.

Product:

Rabbit IgG, 1mg/ml in PBS with 0.02% sodium azide, 50% glycerol, pH7.2.

Molecular Weight:

18kDa

Swiss-Prot:

P16949

Purification&Purity:

Affinity-chromatography

Applications:

WB 1:500~1:2000 IHC 1:50~1:100 ICC/IF 1:50~1:100
IP 1: 50 FC 1:50

Storage&Stability:

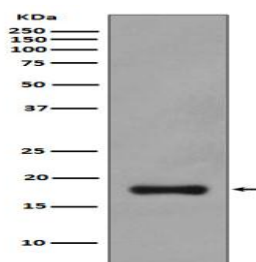
Store at 4 °C short term. Aliquot and store at -20 °C long term. Avoid freeze-thaw cycles.

Specificity:

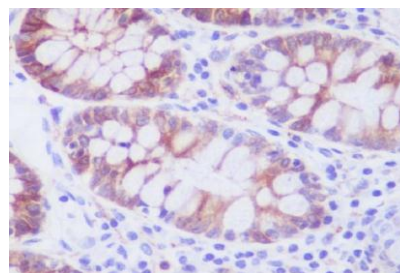
Stathmin 1 Antibody detects endogenous levels of total

Stathmin 1

DATA:



Western blot analysis of Stathmin 1 expression in PC-12 cell lysate.



Immunohistochemical analysis of paraffin-embedded human colon, using Stathmin 1 Antibody.

Note:

For research use only, not for use in diagnostic procedure.

Bioworld Technology, Inc.

Add: 1660 South Highway 100, Suite 500 St. Louis Park, MN 55416, USA.

Email: info@bioworld.com

Tel: 6123263284

Fax: 6122933841

Bioworld technology, co. Ltd.

Add: No 9, weidi road Qixia District Nanjing, 210046, P. R. China.

Email: info@biogot.com

Tel: 0086-025-68037686

Fax: 0086-025-68035151