

Brd4 Rabbit monoclonal antibody

Catalog: BS40137

Host: Rabbit

Reactivity: Human Mouse Rat

BackGround:

Bromodomain-containing protein 4 (BRD4) is a member of the bromodomains and extra terminal (BET) family of proteins, which also includes BRD2, BRD3, and BRDT. BET family proteins contain two tandem bromodomains and an extra terminal (ET) domain, and bind acetyl lysine residues. BRD4 is a chromatin-binding protein with a preference for Lys14 on histone H3 as well as Lys5 and Lys12 on histone H4. BRD4 chromatin binding occurs throughout the cell cycle, including condensed mitotic chromosomes, when the majority of genes are silenced.

Product:

Rabbit IgG, 1mg/ml in PBS with 0.02% sodium azide, 50% glycerol, pH7.2.

Molecular Weight:

152kDa

Swiss-Prot:

O60885

Purification&Purity:

Affinity-chromatography

Applications:

WB 1:500~1:2000 IHC 1:50~1:200 ICC/IF 1:50~1:200
IP 1:50

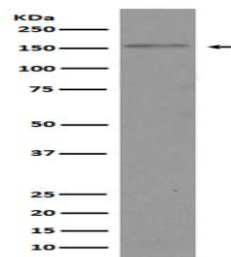
Storage&Stability:

Store at 4 °C short term. Aliquot and store at -20 °C long term. Avoid freeze-thaw cycles.

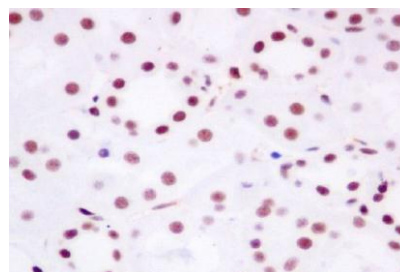
Specificity:

Brd4 Antibody detects endogenous levels of total Brd4

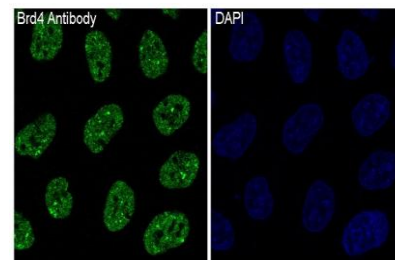
DATA:



Western blot analysis of Brd4 expression in HeLa cell lysate.



Immunohistochemical analysis of paraffin-embedded human kidney, using Brd4 Antibody.



Immunofluorescent analysis of HeLa cells, using Brd4 Antibody .

Note:

For research use only, not for use in diagnostic procedure.

Bioworld Technology, Inc.

Add: 1660 South Highway 100, Suite 500 St. Louis Park, MN 55416, USA.

Email: info@bioworld.com

Tel: 6123263284

Fax: 6122933841

Bioworld technology, co. Ltd.

Add: No 9, weidi road Qixia District Nanjing, 210046, P. R. China.

Email: info@biogot.com

Tel: 0086-025-68037686

Fax: 0086-025-68035151