

Firefly Luciferase Rabbit monoclonal antibody

Catalog: BS40130

Host: Rabbit

Reactivity: Firefly

BackGround:

Produces green light with a wavelength of 562 nm. Luciferase from the firefly has become one of the more widely used reporter proteins for the study of gene expression. Luciferase catalyzes a bioluminescent reaction which requires the substrate luciferin as well as Mg²⁺ and ATP. Mixing these reagents with the cell extract containing luciferase, results in a flash of light that decays rapidly. This light can be detected by a luminometer. The total light emission is proportional to the luciferase activity of the sample.

Product:

Rabbit IgG, 1mg/ml in PBS with 0.02% sodium azide, 50% glycerol, pH7.2.

Molecular Weight:

55kDa

Swiss-Prot:

P08659

Purification&Purity:

Affinity-chromatography

Applications:

WB 1:500~1:2000 ICC/IF 1:50~1:200

Storage&Stability:

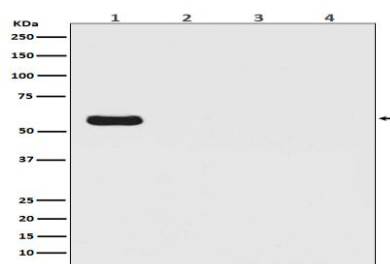
Store at 4 °C short term. Aliquot and store at -20 °C long term. Avoid freeze-thaw cycles.

Specificity:

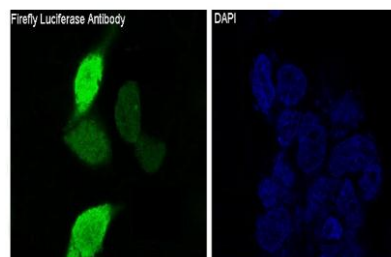
Firefly Luciferase Antibody detects endogenous levels of

total Firefly Luciferase

DATA:



Western blot analysis of Firefly Luciferase Antibody - N-terminal expression in (1) Firefly Luciferase transfected 293T cell lysate; (2) HeLa cell lysate; (3) NIH/3T3 cell lysate; (4) C6 cell lysate.



Immunofluorescent analysis of 293 cells transfected with Firefly Luciferase, using Firefly Luciferase Antibody.

Note:

For research use only, not for use in diagnostic procedure.

Bioworld Technology, Inc.

Add: 1660 South Highway 100, Suite 500 St. Louis Park, MN 55416, USA.

Email: info@bioworld.com

Tel: 6123263284

Fax: 6122933841

Bioworld technology, co. Ltd.

Add: No 9, weidi road Qixia District Nanjing, 210046, P. R. China.

Email: info@biogot.com

Tel: 0086-025-68037686

Fax: 0086-025-68035151