

## Calreticulin Rabbit monoclonal antibody

Catalog: BS40120

Host: Rabbit

Reactivity: Human Mouse Rat

### BackGround:

Calcium is a universal signaling molecule involved in many cellular functions such as cell motility, metabolism, protein modification, protein folding and apoptosis. Calcium is stored in the endoplasmic reticulum (ER), where it is buffered by calcium binding chaperones such as calnexin and calreticulin, and is released via the IP3 Receptor.

### Product:

Rabbit IgG, 1mg/ml in PBS with 0.02% sodium azide, 50% glycerol, pH7.2.

### Molecular Weight:

60kDa

### Swiss-Prot:

P27797

### Purification&Purity:

Affinity-chromatography

### Applications:

WB 1:500~1:2000 IHC 1:50~1:200 ICC/IF 1:50~1:200  
IP 1:50 FC 1:50

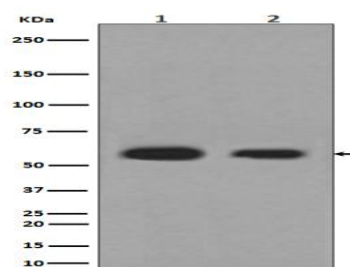
### Storage&Stability:

Store at 4 °C short term. Aliquot and store at -20 °C long term. Avoid freeze-thaw cycles.

### Specificity:

Calreticulin Antibody - ER Marker detects endogenous levels of total Calreticulin - ER Marker

### DATA:



Western blot analysis of Calreticulin expression in (1)HeLa cell lysate; (2)HepG2 cell lysate.

### Note:

For research use only, not for use in diagnostic procedure.

### Bioworld Technology, Inc.

Add: 1660 South Highway 100, Suite 500 St. Louis Park, MN 55416, USA.

Email: [info@bioworld.com](mailto:info@bioworld.com)

Tel: 6123263284

Fax: 6122933841

### Bioworld technology, co. Ltd.

Add: No 9, weidi road Qixia District Nanjing, 210046, P. R. China.

Email: [info@biogol.com](mailto:info@biogol.com)

Tel: 0086-025-68037686

Fax: 0086-025-68035151