

C Reactive Protein Rabbit monoclonal antibody

Catalog: BS40119

Host: Rabbit

Reactivity: Human

BackGround:

Serum CRP values are routinely measured to detect or monitor many human diseases and minor elevations of C-reactive protein are predictive of cardiovascular events in patients with coronary heart disease. CRP promotes host defense, is an efficient activator of the classical C cascade, and shown to be opsonic. The opsonic and C activation activities are responsible for the nonspecific host defense activities providing protection in the preimmune stage of acute infections.

Product:

Rabbit IgG, 1mg/ml in PBS with 0.02% sodium azide, 50% glycerol, pH7.2.

Molecular Weight:

25kDa

Swiss-Prot:

P02741

Purification&Purity:

Affinity-chromatography

Applications:

WB 1:1000~1:2000 IHC 1:500~1:1000 IP 1:50

Storage&Stability:

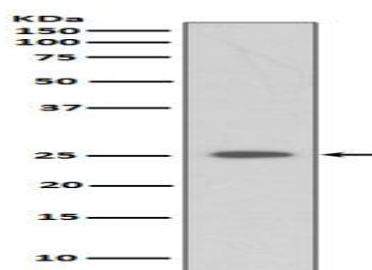
Store at 4 °C short term. Aliquot and store at -20 °C long term. Avoid freeze-thaw cycles.

Specificity:

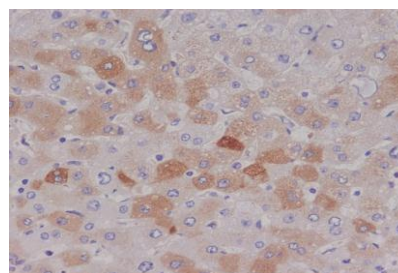
C Reactive Protein Antibody detects endogenous levels of

total C Reactive Protein

DATA:



Western blot analysis of CRP expression in Etoposide treated 293 whole cell lysates.



Immunohistochemical analysis of paraffin-embedded human liver, using C Reactive Protein Antibody.

Note:

For research use only, not for use in diagnostic procedure.

Bioworld Technology, Inc.

Add: 1660 South Highway 100, Suite 500 St. Louis Park, MN 55416, USA.

Email: info@bioworld.com

Tel: 6123263284

Fax: 6122933841

Bioworld technology, co. Ltd.

Add: No 9, weidi road Qixia District Nanjing, 210046, P. R. China.

Email: info@biogot.com

Tel: 0086-025-68037686

Fax: 0086-025-68035151