

Cytokeratin 20 Rabbit monoclonal antibody

Catalog: BS40110

Host: Rabbit

Reactivity: Human Rat

BackGround:

Intermediate-sized filament (IF) protein designated cy-tokeratin (CK) 20 is a major cellular protein of mature enterocytes and goblet cells commonly found in mucosal epithelium of the mammalian gastrointestinal tract. Re-sults strongly suggest that transcriptional regulation of keratin genes in the intestinal epithelium occurs at the level of both immature and terminally differentiated epi-thelial cells, and is tightly regulated during both fetal de-velopment and crypt-to-villus differentiation of the intes-tinal epithelium.

Product:

Rabbit IgG, 1mg/ml in PBS with 0.02% sodium azide, 50% glycerol, pH7.2.

Molecular Weight:

44kDa

Swiss-Prot:

P35900

Purification&Purity:

Affinity-chromatography

Applications:

WB 1:500~1:2000 IHC 1:50~1:200 ICC/IF 1:50~1:200
IP 1:30 FC 1:50

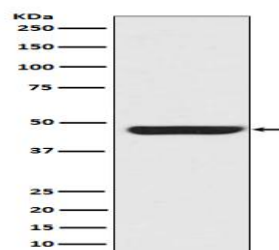
Storage&Stability:

Store at 4 °C short term. Aliquot and store at -20 °C long term. Avoid freeze-thaw cycles.

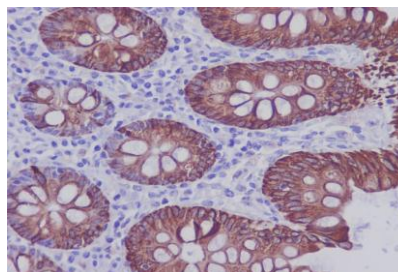
Specificity:

Cytokeratin 20 Antibody detects endogenous levels of to-tal Cytokeratin 20

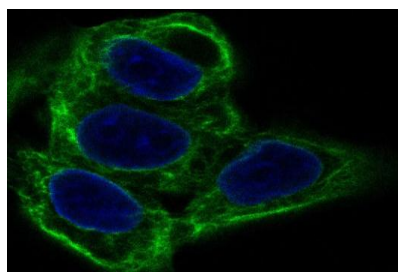
DATA:



Western blot analysis of Cytokeratin 20 expression in SW480 cell ly-sate.



Immunohistochemical analysis of paraffin-embedded human colon, us-ing Cytokeratin 20 Antibody.



Immunofluorescent analysis of HeLa cells, using Cytokeratin 20 Anti-body .

Note:

For research use only, not for use in diagnostic procedure.

Bioworld Technology, Inc.

Add: 1660 South Highway 100, Suite 500 St. Louis Park,
MN 55416,USA.

Email: info@bioworld.com

Tel: 6123263284

Fax: 6122933841

Bioworld technology, co. Ltd.

Add: No 9, weidi road Qixia District Nanjing, 210046,
P. R. China.

Email: info@biogot.com

Tel: 0086-025-68037686

Fax: 0086-025-68035151