

## Rab4 Rabbit monoclonal antibody

Catalog: BS40104

Host: Rabbit

Reactivity: Human Mouse Rat

### BackGround:

The protein encoded by this gene belongs to the rab family. Rab4A protein is involved in the regulation of procathepsin L secretion, it was either inhibited by expression of a Rab4A dominant-negative mutant or increased by overexpression of the wild-type Rab4A in human melanoma cells.

### Product:

Rabbit IgG, 1mg/ml in PBS with 0.02% sodium azide, 50% glycerol, pH7.2.

### Molecular Weight:

24kDa

### Swiss-Prot:

P20338

### Purification&Purity:

Affinity-chromatography

### Applications:

WB 1:500~1:2000 ICC/IF 1:50~1:200 FC 1:50

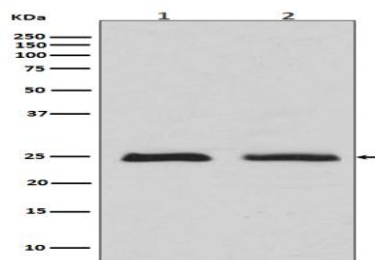
### Storage&Stability:

Store at 4 °C short term. Aliquot and store at -20 °C long term. Avoid freeze-thaw cycles.

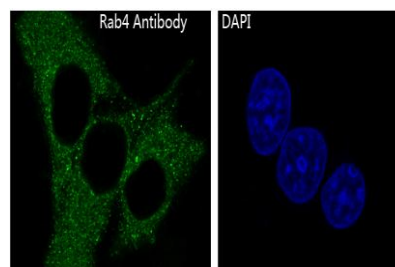
### Specificity:

Rab4 Antibody detects endogenous levels of total Rab4

### DATA:



Western blot analysis of Rab4 expression in (1)MCF7 cell lysates (2)HeLa cell lysate.



Immunofluorescent analysis of HeLa cells, using Rab4 Antibody .

### Note:

For research use only, not for use in diagnostic procedure.

### Bioworld Technology, Inc.

Add: 1660 South Highway 100, Suite 500 St. Louis Park, MN 55416,USA.

Email: [info@bioworld.com](mailto:info@bioworld.com)

Tel: 6123263284

Fax: 6122933841

### Bioworld technology, co. Ltd.

Add: No 9, weidi road Qixia District Nanjing, 210046, P. R. China.

Email: [info@biogol.com](mailto:info@biogol.com)

Tel: 0086-025-68037686

Fax: 0086-025-68035151