

CETP Rabbit monoclonal antibody

Catalog: BS40100

Host: Rabbit

Reactivity: Human

BackGround:

Cholesteryl ester transfer protein (CETP) is a circulating metabolic enzyme that transports cholesterol from the arteries to the liver. CETP converts cholesteryl esters from antiatherogenic high density lipoproteins (HDLs) to proatherogenic apolipoprotein B (apoB)-containing lipoproteins, including very low-, intermediate-, and low-DLs. Efficient transfer and exchange of cholesteryl esters and triglycerides between the lipoprotein classes of human plasma is necessary to maintain healthy arteries.

Product:

Rabbit IgG, 1mg/ml in PBS with 0.02% sodium azide, 50% glycerol, pH7.2.

Molecular Weight:

55kDa

Swiss-Prot:

P11597

Purification&Purity:

Affinity-chromatography

Applications:

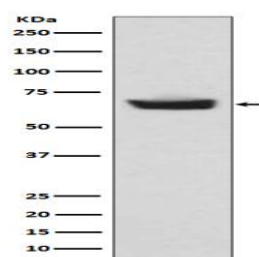
WB 1:500~1:2000 IP 1:50

Storage&Stability:

Store at 4 °C short term. Aliquot and store at -20 °C long term. Avoid freeze-thaw cycles.

Specificity:

CETP Antibody detects endogenous levels of total CETP

DATA:

Western blot analysis of CETP expression in human plasma lysate.

Note:

For research use only, not for use in diagnostic procedure.

Bioworld Technology, Inc.

Add: 1660 South Highway 100, Suite 500 St. Louis Park,
MN 55416, USA.

Email: info@bioworld.com

Tel: 6123263284

Fax: 6122933841

Bioworld technology, co. Ltd.

Add: No 9, weidi road Qixia District Nanjing, 210046,
P. R. China.

Email: info@biogol.com

Tel: 0086-025-68037686

Fax: 0086-025-68035151