

pan Cadherin Rabbit monoclonal antibody

Catalog: BS40099

Host: Rabbit

Reactivity: Human Mouse Rat

BackGround:

Cadherins are members of a multigene family of single chain glycoprotein receptors mediating calcium dependent cell-cell adhesion. They play an important role in the growth and development of cells via the mechanisms of control of tissue architecture and the maintenance of tissue integrity. Cadherins are expressed in a tissue specific manner and are required for assembly of cells into solid tissue.

Product:

Rabbit IgG, 1mg/ml in PBS with 0.02% sodium azide, 50% glycerol, pH7.2.

Molecular Weight:

~ 120 kDa

Swiss-Prot:

P12830/P19022/P22223/P33151/P55283/P39038

Purification&Purity:

Affinity-chromatography

Applications:

WB 1:1000~1:5000 IHC 1:50~1:200 ICC/IF 1:50~1:200
IP 1:50 FC 1:50

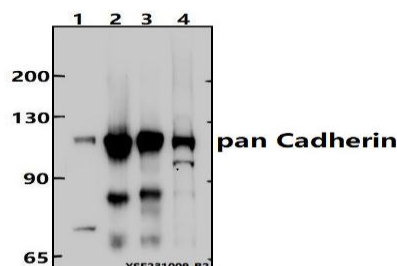
Storage&Stability:

Store at 4 °C short term. Aliquot and store at -20 °C long term. Avoid freeze-thaw cycles.

Specificity:

pan Cadherin Antibody detects endogenous levels of total pan Cadherin

DATA:



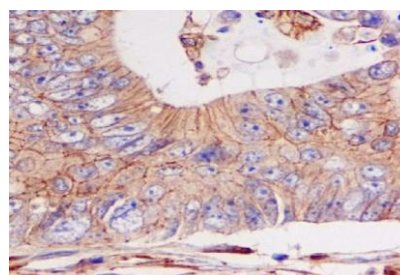
Western blot (WB) analysis of pan Cadherin Rabbit monoclonal antibody at 1:500 dilution

Lane1:MCF-7 whole cell lysate(30ug)

Lane2:C6 whole cell lysate(30ug)

Lane3:The Heart tissue lysate of Mouse(30ug)

Lane4:The Liver tissue lysate of Rat(30ug)



Immunohistochemical analysis of paraffin-embedded colon cancer, using pan Cadherin Antibody .

Note:

For research use only, not for use in diagnostic procedure.

Bioworld Technology, Inc.

Add: 1660 South Highway 100, Suite 500 St. Louis Park, MN 55416, USA.

Email: info@bioworld.com

Tel: 6123263284

Fax: 6122933841

Bioworld technology, co. Ltd.

Add: No 9, weidi road Qixia District Nanjing, 210046, P. R. China.

Email: info@biogot.com

Tel: 0086-025-68037686

Fax: 0086-025-68035151