

APAF1 Rabbit monoclonal antibody

Catalog: BS40093

Host: Rabbit

Reactivity: Human Mouse

BackGround:

APAF Oligomeric Apaf-1 mediates the cytochrome c-dependent autocatalytic activation of pro-caspase-9 (Apaf-3), leading to the activation of caspase-3 and apoptosis. This activation requires ATP. Isoform 6 is less effective in inducing apoptosis. Induced by E2F and p53 in apoptotic neurons. Monomer. Oligomerizes upon binding of cytochrome c and dATP. Oligomeric Apaf-1 and pro-caspase-9 bind to each other via their respective NH2-terminal CARD domains and consecutively mature caspase-9 is released from the complex. Pro-caspase-3 is recruited into the Apaf-1-pro-caspase-9 complex via interaction with pro-caspase-9. Interacts with APIP. 6 isoforms of the human protein are produced by alternative splicing.

Product:

Rabbit IgG, 1mg/ml in PBS with 0.02% sodium azide, 50% glycerol, pH7.2.

Molecular Weight:

~ 130 kDa

Swiss-Prot:

O14727

Purification&Purity:

Affinity-chromatography

Applications:

WB 1:500~1:2000 IHC 1:50~1:200 ICC/IF 1:50~1:200

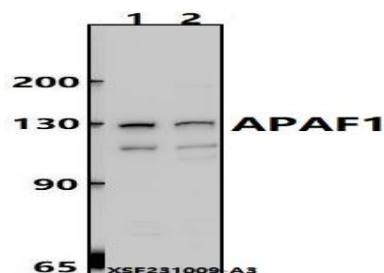
Storage&Stability:

Store at 4 °C short term. Aliquot and store at -20 °C long term. Avoid freeze-thaw cycles.

Specificity:

APAF1 Antibody detects endogenous levels of total APAF1

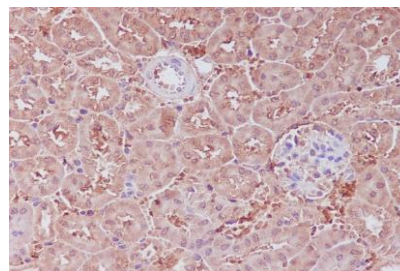
DATA:



Western blot (WB) analysis of APAF1 Rabbit monoclonal antibody at 1:500 dilution

Lane1:MCF-7 whole cell lysate(30ug)

Lane2:HepG2 whole cell lysate(30ug)



Immunohistochemical analysis of paraffin-embedded mouse kidney, using APAF1 Antibody .

Note:

For research use only, not for use in diagnostic procedure.

Bioworld Technology, Inc.

Add: 1660 South Highway 100, Suite 500 St. Louis Park, MN 55416, USA.

Email: info@bioworld.com

Tel: 6123263284

Fax: 6122933841

Bioworld technology, co. Ltd.

Add: No 9, weidi road Qixia District Nanjing, 210046, P. R. China.

Email: info@biogot.com

Tel: 0086-025-68037686

Fax: 0086-025-68035151