

Desmin Rabbit monoclonal antibody

Catalog: BS40082

Host: Rabbit

Reactivity: Human Mouse Rat

BackGround:

Desmin a class-III intermediate filaments found in muscle cells. In adult striated muscle they form a fibrous network connecting myofibrils to each other and to the plasma membrane from the periphery of the Z-line structures. Mutations in this gene are associated with desmin-related myopathy, a familial cardiac and skeletal myopathy (CSM), and with distal myopathies.

Product:

Rabbit IgG, 1mg/ml in PBS with 0.02% sodium azide, 50% glycerol, pH7.2.

Molecular Weight:

~ 53 kDa

Swiss-Prot:

P17661

Purification&Purity:

Affinity-chromatography

Applications:

WB: 1:500~1:2000 IHC: 1:100~1:500 ICC/IF: 1:50~1:100

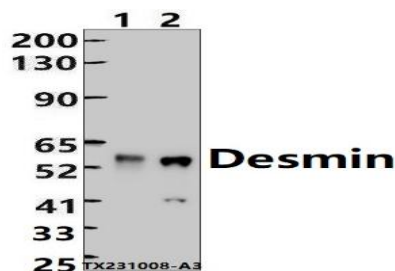
Storage&Stability:

Store at 4 °C short term. Aliquot and store at -20 °C long term. Avoid freeze-thaw cycles.

Specificity:

Desmin Antibody detects endogenous levels of total Desmin

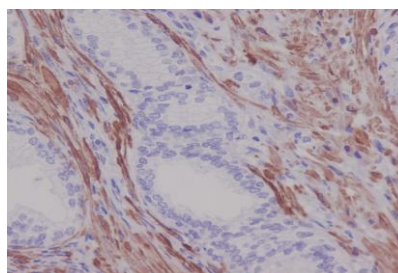
DATA:



Western blot (WB) analysis of Desmin Rabbit monoclonal antibody at 1:500 dilution

Lane1:The heart tissue lysate of Rat(30ug)

Lane2:The heart tissue lysate of Mouse(30ug)



Immunohistochemical analysis of paraffin-embedded human prostate, using Desmin Antibody.

Note:

For research use only, not for use in diagnostic procedure.

Bioworld Technology, Inc.

Add: 1660 South Highway 100, Suite 500 St. Louis Park, MN 55416, USA.

Email: info@bioworld.com

Tel: 6123263284

Fax: 6122933841

Bioworld technology, co. Ltd.

Add: No 9, weidi road Qixia District Nanjing, 210046, P. R. China.

Email: info@biogot.com

Tel: 0086-025-68037686

Fax: 0086-025-68035151