

## LRRK2 Rabbit monoclonal antibody

Catalog: BS40070

Host: Rabbit

Reactivity: Human Mouse Rat

### BackGround:

LRRK2 positively regulates autophagy through a calcium-dependent activation of the CaMKK/AMPK signaling pathway. The process involves activation of nicotinic acid adenine dinucleotide phosphate (NAADP) receptors, increase in lysosomal pH, and calcium release from lysosomes. Together with RAB29, plays a role in the retrograde trafficking pathway for recycling proteins, such as mannose 6 phosphate receptor (M6PR), between lysosomes and the Golgi apparatus in a retromer-dependent manner. Regulates neuronal process morphology in the intact central nervous system (CNS). Plays a role in synaptic vesicle trafficking. Phosphorylates PRDX3. Has GTPase activity. May play a role in the phosphorylation of proteins central to Parkinson disease.

### Product:

Rabbit IgG, 1mg/ml in PBS with 0.02% sodium azide, 50% glycerol, pH7.2.

### Molecular Weight:

286kDa

### Swiss-Prot:

Q5S007

### Purification&Purity:

Affinity-chromatography

### Applications:

WB 1:500~1:2000 IHC 1:50~1:200 ICC/IF 1:50~1:200  
IP 1:50

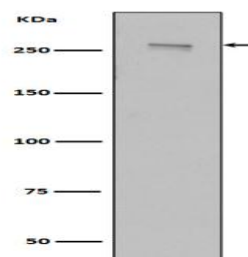
### Storage&Stability:

Store at 4 °C short term. Aliquot and store at -20 °C long term. Avoid freeze-thaw cycles.

### Specificity:

LRRK2 Antibody detects endogenous levels of total LRRK2

### DATA:



Western blot analysis of LRRK2 in HEK293 cell lysate transfected with 3\*Flag wild type, full length LRRK2.

### Note:

For research use only, not for use in diagnostic procedure.

### Bioworld Technology, Inc.

Add: 1660 South Highway 100, Suite 500 St. Louis Park, MN 55416, USA.

Email: [info@bioworld.com](mailto:info@bioworld.com)

Tel: 6123263284

Fax: 6122933841

### Bioworld technology, co. Ltd.

Add: No 9, weidi road Qixia District Nanjing, 210046, P. R. China.

Email: [info@biogol.com](mailto:info@biogol.com)

Tel: 0086-025-68037686

Fax: 0086-025-68035151