

## CD20 Rabbit monoclonal antibody

Catalog: BS40063

Host: Rabbit

Reactivity: Human

### BackGround:

This protein may be involved in the regulation of B-cell activation and proliferation. CD20 (MS4A1, membrane-spanning 4-domains, subfamily A, member 1) is a member of the membrane-spanning 4A gene family. Members of this nascent protein family are characterized by common structural features and similar intron/exon splice boundaries and display unique expression patterns among hematopoietic cells and nonlymphoid tissues.

### Product:

Rabbit IgG, 1mg/ml in PBS with 0.02% sodium azide, 50% glycerol, pH7.2.

### Molecular Weight:

~ 34 kDa

### Swiss-Prot:

P11836

### Purification&Purity:

Affinity-chromatography

### Applications:

WB 1:500~1:2000 IHC 1:50~1:200 FC 1:50~1:200

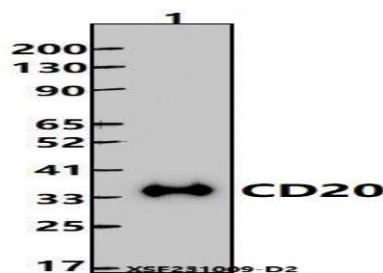
### Storage&Stability:

Store at 4 °C short term. Aliquot and store at -20 °C long term. Avoid freeze-thaw cycles.

### Specificity:

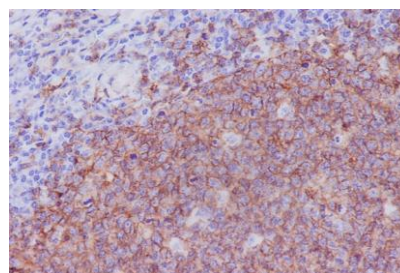
CD20 Antibody detects endogenous levels of total CD20

### DATA:



Western blot (WB) analysis of CD20 Rabbit monoclonal antibody at 1:500 dilution

Lane1:Raji whole cell lysate(30ug)



Immunohistochemical analysis of paraffin-embedded human tonsil, using CD20 Antibody.

### Note:

For research use only, not for use in diagnostic procedure.

### Bioworld Technology, Inc.

Add: 1660 South Highway 100, Suite 500 St. Louis Park, MN 55416, USA.

Email: [info@bioworld.com](mailto:info@bioworld.com)

Tel: 6123263284

Fax: 6122933841

### Bioworld technology, co. Ltd.

Add: No 9, weidi road Qixia District Nanjing, 210046, P. R. China.

Email: [info@biogol.com](mailto:info@biogol.com)

Tel: 0086-025-68037686

Fax: 0086-025-68035151