

CD46 Rabbit monoclonal antibody

Catalog: BS40048

Host: Rabbit

Reactivity: Human

BackGround:

CD46 is a type I membrane protein and a regulatory part of the complement system. This protein has cofactor activity for inactivation of complement components C3b and C4b by serum factor I, which protects the host cell from damage by complement. In addition, CD46 can act as a receptor for the Edmonston strain of measles virus, human herpesvirus-6, and type IV pili of pathogenic *Neisseria*.

Product:

Rabbit IgG, 1mg/ml in PBS with 0.02% sodium azide, 50% glycerol, pH7.2.

Molecular Weight:

~ 55-70 kDa

Swiss-Prot:

P15529

Purification&Purity:

Affinity-chromatography

Applications:

WB 1:500~1:2000 IHC 1:50~1:200 ICC/IF 1:50~1:200

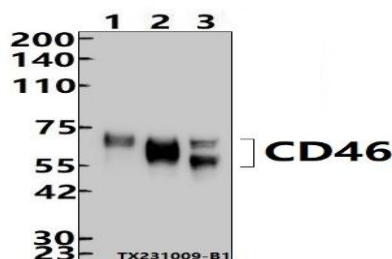
Storage&Stability:

Store at 4 °C short term. Aliquot and store at -20 °C long term. Avoid freeze-thaw cycles.

Specificity:

CD46 Antibody detects endogenous levels of total CD46

DATA:

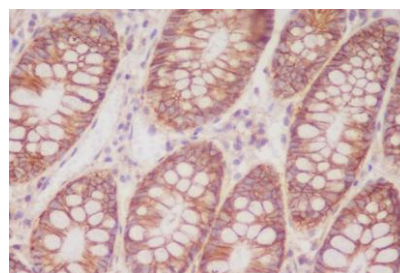


Western blot (WB) analysis of CD46 Rabbit monoclonal antibody at 1:500 dilution

Lane1:K562 whole cell lysate(30ug)

Lane2:A431 whole cell lysate(30ug)

Lane3:HepG2 whole cell lysate(30ug)



Immunohistochemical analysis of paraffin-embedded human colon, using CD46 Antibody.

Note:

For research use only, not for use in diagnostic procedure.

Bioworld Technology, Inc.

Add: 1660 South Highway 100, Suite 500 St. Louis Park, MN 55416, USA.

Email: info@bioworld.com

Tel: 6123263284

Fax: 6122933841

Bioworld technology, co. Ltd.

Add: No 9, weidi road Qixia District Nanjing, 210046, P. R. China.

Email: info@biogot.com

Tel: 0086-025-68037686

Fax: 0086-025-68035151