

Rab4A Rabbit monoclonal antibody

Catalog: BS40042

Host: Rabbit

Reactivity: Human Mouse Rat

BackGround:

The protein encoded by this gene belongs to the rab family. Rab4A protein is involved in the regulation of procathepsin L secretion, it was either inhibited by expression of a Rab4A dominant-negative mutant or increased by overexpression of the wild-type Rab4A in human melanoma cells.

Product:

Rabbit IgG, 1mg/ml in PBS with 0.02% sodium azide, 50% glycerol, pH7.2.

Molecular Weight:

24kDa

Swiss-Prot:

P20338

Purification&Purity:

Affinity-chromatography

Applications:

WB 1:1000~1:2000 ICC/IF 1:50~1:200 IP 1:50

Storage&Stability:

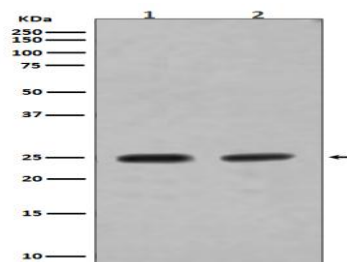
Store at 4 °C short term. Aliquot and store at -20 °C long term. Avoid freeze-thaw cycles.

Specificity:

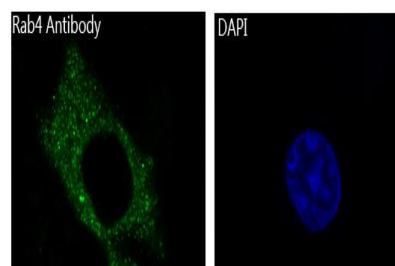
Rab4A Antibody detects endogenous levels of total

Rab4A

DATA:



Western blot analysis of Rab4A expression in (1) SH-SY5Y cell lysate; (2) MCF-7 cell lysate.



Immunofluorescent analysis of HeLa cells, using Rab4A Antibody .

Note:

For research use only, not for use in diagnostic procedure.

Bioworld Technology, Inc.

Add: 1660 South Highway 100, Suite 500 St. Louis Park, MN 55416, USA.

Email: info@bioworld.com

Tel: 6123263284

Fax: 6122933841

Bioworld technology, co. Ltd.

Add: No 9, weidi road Qixia District Nanjing, 210046, P. R. China.

Email: info@biogot.com

Tel: 0086-025-68037686

Fax: 0086-025-68035151