

IL21 polyclonal antibody

Catalog: BS3983

Host: Rabbit

Reactivity: Human, Mouse

BackGround:

Cytokine with immunoregulatory activity. May promote the transition between innate and adaptive immunity. Induces the production of IgG1 and IgG3 in B-cells (By similarity).

Implicated in the generation and maintenance of T follicular helper (Tfh) cells and the formation of germinal-centers. Together with IL6, control the early generation of Tfh cells and are critical for an effective antibody response to acute viral infection (By similarity).

May play a role in proliferation and maturation of natural killer (NK) cells in synergy with IL15. May regulate proliferation of mature B- and T-cells in response to activating stimuli. In synergy with IL15 and IL18 stimulates interferon gamma production in T-cells and NK cells.

During T-cell mediated immune response may inhibit dendritic cells (DC) activation and maturation (By similarity).

Product:

Rabbit IgG, 1mg/ml in PBS with 0.02% sodium azide, 50% glycerol, pH7.2.

Molecular Weight:

~ 19 kDa

Swiss-Prot:

Q9HBE4

Purification&Purity:

The antibody was affinity-purified from rabbit antiserum by affinity-chromatography using epitope-specific im-

munogen and the purity is > 95% (by SDS-PAGE).

Applications:

WB 1:1000~1:2000

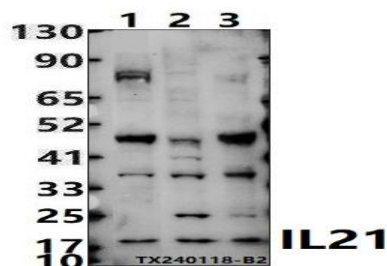
Storage&Stability:

Store at 4 °C short term. Aliquot and store at -20 °C long term. Avoid freeze-thaw cycles.

Specificity:

IL21 polyclonal antibody detects endogenous levels of IL21 protein.

DATA:



Western blot (WB) analysis of IL21 polyclonal antibody at 1:1000 dilution

Lane1:RAW264.7 whole cell lysate(30ug)

Lane2:K562 whole cell lysate(30ug)

Lane3:Jurkat whole cell lysate(30ug)

Note:

For research use only, not for use in diagnostic procedure.

Bioworld Technology, Inc.

Add: 1660 South Highway 100, Suite 500 St. Louis Park, MN 55416, USA.

Email: info@bioworld.com

Tel: 6123263284

Fax: 6122933841

Bioworld technology, co. Ltd.

Add: No 9, weidi road Qixia District Nanjing, 210046, P. R. China.

Email: info@biogot.com

Tel: 0086-025-68037686

Fax: 0086-025-68035151