

CCN2 polyclonal antibody

Catalog: BS3979

Host: Rabbit

Reactivity: Human

BackGround:

Connective tissue growth factor (CTGF, CCN2) belongs to the CCN (CYR61, CTGF, NOV) family of secreted extracellular matrix (ECM) proteins. Members of this family contain four conserved cysteine-rich domains, and interact in the ECM with a diverse array of cell surface receptors, including integrins and heparin-sulfate proteoglycans. These interactions regulate a multitude of cellular and tissue functions, including adhesion, proliferation, migration, differentiation, senescence, angiogenesis, inflammation, and wound repair. The CTGF gene is a transcriptional target of both YAP/TAZ and TGF β -SMAD signaling pathways, and aberrant regulation of CTGF expression is strongly associated with pathological conditions, notably cancer and fibrosis.

Product:

Rabbit IgG, 1mg/ml in PBS with 0.02% sodium azide, 50% glycerol, pH7.2.

Molecular Weight:

~ 35 kDa

Swiss-Prot:

P29279

Purification&Purity:

The antibody was affinity-purified from rabbit antiserum by affinity-chromatography using epitope-specific immunogen and the purity is > 95% (by SDS-PAGE).

Applications:

WB 1:1000~1:2000

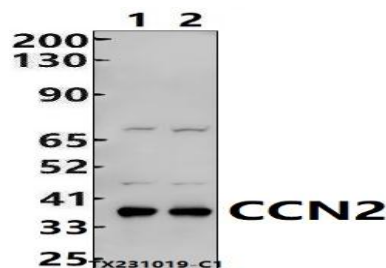
Storage&Stability:

Store at 4 °C short term. Aliquot and store at -20 °C long term. Avoid freeze-thaw cycles.

Specificity:

CCN2 polyclonal antibody detects endogenous levels of CCN2 protein.

DATA:



Western blot (WB) analysis of CCN2 polyclonal antibody at 1:1000 dilution

Lane1:HepG2 whole cell lysate(30ug)

Lane2:A549 whole cell lysate(30ug)

Note:

For research use only, not for use in diagnostic procedure.

Bioworld Technology, Inc.

Add: 1660 South Highway 100, Suite 500 St. Louis Park, MN 55416, USA.

Email: info@bioworld.com

Tel: 6123263284

Fax: 6122933841

Bioworld technology, co. Ltd.

Add: No 9, weidi road Qixia District Nanjing, 210046, P. R. China.

Email: info@biogot.com

Tel: 0086-025-68037686

Fax: 0086-025-68035151