

## RRS1 (R286) polyclonal antibody

Catalog: BS3932

Host: Rabbit

Reactivity: Human

### BackGround:

RRS1, also known as KIAA0112, ribosome biogenesis regulatory protein homolog, regulator of ribosome synthesis 1, ribosome biogenesis regulatory protein RRS1 homolog or RRR, is a 365 amino acid protein belonging to the RRS1 family. RRS1 shows nucleolar localization and is involved in both ribosome biogenesis and chromosome congression. Recent studies indicate that in the absence of RRS1, cells experience mitotic delay due to abnormal spindle organization and chromosome alignment. The gene encoding RRS1 maps to human chromosome 8q13.1. Consisting of nearly 146 million base pairs, chromosome 8 encodes over 800 genes and is associated with a variety of diseases and malignancies. Schizophrenia, bipolar disorder, Trisomy 8, Pfeiffer syndrome, congenital hypothyroidism, Waardenburg syndrome and some leukemias and lymphomas are thought to occur as a result of defects in specific genes that map to chromosome 8.

### Product:

1 mg/ml in Phosphate buffered saline (PBS) with 0.05% sodium azide, approx. pH 7.2.

### Molecular Weight:

~ 45 kDa

### Swiss-Prot:

Q15050

### Purification&Purity:

The antibody was affinity-purified from rabbit antiserum by affinity-chromatography using epitope-specific immunogen and the purity is > 95% (by SDS-PAGE).

### Applications:

WB: 1:500~1:1000

IHC: 1:50~1:200

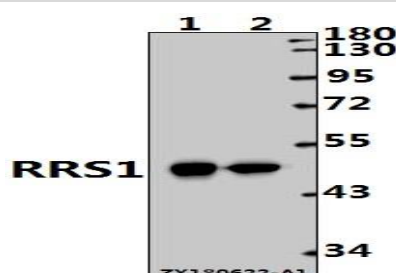
### Storage&Stability:

Store at 4 °C short term. Aliquot and store at -20 °C long term. Avoid freeze-thaw cycles.

### Specificity:

RRS1 (R286) polyclonal antibody detects endogenous levels of RRS1 protein.

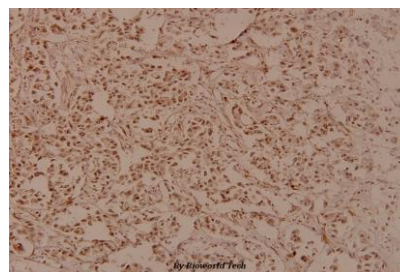
### DATA:



Western blot (WB) analysis of RRS1 (R286) pAb at 1:1000 dilution

Lane1:EC9706 whole cell lysate(10ug)

Lane2:A375 whole cell lysate(10ug)



Immunohistochemistry (IHC) analyzes of RRS1 (R286) pAb in paraffin-embedded human breast carcinoma tissue at 1:100.

### Note:

For research use only, not for use in diagnostic procedure.

### Bioworld Technology, Inc.

Add: 1660 South Highway 100, Suite 500 St. Louis Park, MN 55416, USA.

Email: [info@bioworld.com](mailto:info@bioworld.com)

Tel: 6123263284

Fax: 6122933841

### Bioworld technology, co. Ltd.

Add: No 9, weidi road Qixia District Nanjing, 210046, P. R. China.

Email: [info@biogot.com](mailto:info@biogot.com)

Tel: 0086-025-68037686

Fax: 0086-025-68035151