

## Renin (L238) polyclonal antibody

Catalog: BS3925

Host: Rabbit

Reactivity: Human

### BackGround:

Renin is a highly specific endopeptidase that mediates the cleavage of the circulating substrate angiotensinogen to yield Angiotensin I. Angiotensin-converting enzyme I (ACE) then completes the conversion from Angiotensin I to Angiotensin II which is significant in the regulation of electrolyte balance and blood pressure. Sympathetic stimulation ( $\beta$ 1-adrenergic receptors), renal artery hypotension and decreases in sodium delivery to the distal tubules of the kidney signal the release of Renin. The Renin-Angiotensin system (RAS) is essential for regulating blood volume, arterial pressure and normal cardiac and vascular function. Renin is synthesized and secreted by modified smooth muscle cells in the juxtaglomerular apparatus (JGA) of the kidney. Expression of Renin in other tissues, including brain, has been verified although the homeostatic role it may play is yet to be firmly established.

### Product:

1 mg/ml in Phosphate buffered saline (PBS) with 0.05% sodium azide, approx. pH 7.2.

### Molecular Weight:

~ 45 kDa

### Swiss-Prot:

P00797

### Purification&Purity:

The antibody was affinity-purified from rabbit antiserum by affinity-chromatography using epitope-specific immunogen and the purity is > 95% (by SDS-PAGE).

### Applications:

WB: 1:500~1:1000

IHC: 1:50~1:200

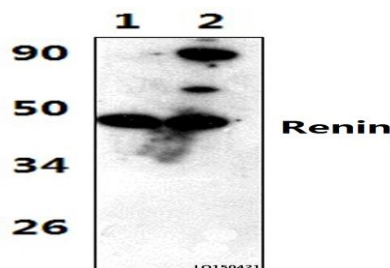
### Storage&Stability:

Store at 4 °C short term. Aliquot and store at -20 °C long term. Avoid freeze-thaw cycles.

### Specificity:

Renin (L238) polyclonal antibody detects endogenous levels of Renin protein.

### DATA:



Western blot (WB) analysis of Renin (L238) polyclonal antibody at 1:1000 dilution

Lane1:THP-1 whole cell lysate(37ug) Lane2:JURKAT whole cell lysate(37ug)

Immunohistochemistry (IHC) analyzes of Renin (L238) pAb in paraffin-embedded human placenta tissue.

### Note:

For research use only, not for use in diagnostic procedure.

### Bioworld Technology, Inc.

Add: 1660 South Highway 100, Suite 500 St. Louis Park, MN 55416, USA.

Email: [info@bioworld.com](mailto:info@bioworld.com)

Tel: 6123263284

Fax: 6122933841

### Bioworld technology, co. Ltd.

Add: No 9, weidi road Qixia District Nanjing, 210046, P. R. China.

Email: [info@biogol.com](mailto:info@biogol.com)

Tel: 0086-025-68037686

Fax: 0086-025-68035151