

CPM (L113) polyclonal antibody

Catalog: BS3827

Host: Rabbit

Reactivity: Human, Mouse, Rat

BackGround:

Carboxypeptidase M (CPM) is a 443 amino acid protein belonging to the metallo-carboxypeptidase (metallo-CP) family. Localized to the cell membrane, CPM contains hydrophobic regions in the N and C- termini and has six potential asparagine-linked glycosylation sites. Functionally, CPM specifically removes C-terminal basic amino acids (arginine or lysine) from proteins and polypeptides and is believed to play a role in monocyte to macrophage differentiation. CPM is also thought to play an important role in the control of peptide hormone and growth factor activity at the cell surface, as well as in the membrane-localized degradation of extracellular proteins. Three isoforms of this protein exist as a result of alternative splicing events.

Product:

1 mg/ml in Phosphate buffered saline (PBS) with 0.05% sodium azide, approx. pH 7.2.

Molecular Weight:

~ 51 kDa

Swiss-Prot:

P14384

Purification&Purity:

The antibody was affinity-purified from rabbit antiserum by affinity-chromatography using epitope-specific immunogen and the purity is > 95% (by SDS-PAGE).

Applications:

WB: 1:500~1:1000

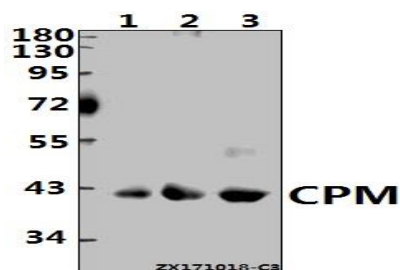
Storage&Stability:

Store at 4 °C short term. Aliquot and store at -20 °C long term. Avoid freeze-thaw cycles.

Specificity:

CPM (L113) polyclonal antibody detects endogenous levels of CPM protein.

DATA:



Western blot (WB) analysis of CPM (L113) pAb at 1:500 dilution

Lane1:Hela whole cell lysate(40ug)

Lane2:The Uterus tissue lysate of Mouse(40ug)

Lane3:The Uterus tissue lysate of Rat(40ug)

Note:

For research use only, not for use in diagnostic procedure.

Bioworld Technology, Inc.

Add: 1660 South Highway 100, Suite 500 St. Louis Park, MN 55416, USA.

Email: info@bioworld.com

Tel: 6123263284

Fax: 6122933841

Bioworld technology, co. Ltd.

Add: No 9, weidi road Qixia District Nanjing, 210046, P. R. China.

Email: info@biogot.com

Tel: 0086-025-68037686

Fax: 0086-025-68035151