

## X11 $\gamma$ (R401) polyclonal antibody

Catalog: BS3806

Host: Rabbit

Reactivity: Human

### BackGround:

Amyloid  $\beta$  precursor protein ( $\beta$  APP) is a major constituent of the amyloid deposits in patients with Alzheimer's disease. The amyloid  $\beta$  precursor is known to interact with several proteins, including the G heterotrimeric protein, APP-BP1, and X11. The neuronal, transmembrane protein X11 is known to bind to the amyloid  $\beta$  precursor protein via a phosphotyrosine binding (PTB) domain, reducing the secretion of cellular  $\beta$  APP and slowing  $\beta$  APP processing pathways. X11 binds specifically to the YENPTY motif, which is involved in the internalization of  $\beta$  APP. Multiple splice variants of X11 have been identified, including X11  $\alpha$ ,  $\beta$  and  $\gamma$  (also known as Mint 1, 2 and 3, respectively).

### Product:

1 mg/ml in Phosphate buffered saline (PBS) with 0.05% sodium azide, approx. pH 7.2.

### Molecular Weight:

~ 61 kDa

### Swiss-Prot:

O96018

### Purification&Purity:

The antibody was affinity-purified from rabbit antiserum by affinity-chromatography using epitope-specific immunogen and the purity is > 95% (by SDS-PAGE).

### Applications:

IHC: 1:50~1:200

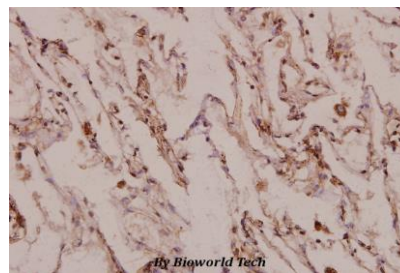
### Storage&Stability:

Store at 4 °C short term. Aliquot and store at -20 °C long term. Avoid freeze-thaw cycles.

### Specificity:

X11 $\gamma$  (R401) polyclonal antibody detects endogenous levels of X11 $\gamma$  protein.

### DATA:



Immunohistochemistry (IHC) analyzes of X11 $\gamma$  (R401) pAb in paraffin-embedded human lung carcinoma tissue at 1:100.

### Note:

For research use only, not for use in diagnostic procedure.

### Bioworld Technology, Inc.

Add: 1660 South Highway 100, Suite 500 St. Louis Park, MN 55416, USA.

Email: [info@bioworld.com](mailto:info@bioworld.com)

Tel: 6123263284

Fax: 6122933841

### Bioworld technology, co. Ltd.

Add: No 9, weidi road Qixia District Nanjing, 210046, P. R. China.

Email: [info@biogot.com](mailto:info@biogot.com)

Tel: 0086-025-68037686

Fax: 0086-025-68035151