

SLC25A6 (R155) polyclonal antibody

Catalog: BS3799

Host: Rabbit

Reactivity: Human, Mouse, Rat

BackGround:

ANT2 (adenine nucleotide translocator 2), also known as SLC25A5 (solute carrier family 25 (mitochondrial carrier; adenine nucleotide translocator), member 5), T2, T3, 2F1 or AAC2, is a 298 amino acid multi-pass membrane protein that localizes to the inner mitochondrial membrane and contains three solcar repeats. Existing as one of the most abundant mitochondrial proteins, ANT2 functions as a homodimer that facilitates the exchange of ADP and ATP between the mitochondrion and the cytosol, thus linking the compartment of ATP production (within the mitochondrion) to the areas of ATP utilization (within the cytosol). Suppression of ANT2 in breast cancer cells results in apoptosis and tumor growth inhibition, suggesting that ANT2 may be involved in carcinogenesis. ANT3 (adenine nucleotide translocator 2) is a 298 amino acid mitochondrial protein that functions in a similar manner to ANT2 but, unlike ANT2, may also play a role in the formation of the permeability transition pore complex (PTPC), a structure that is important for the regulation of apoptosis.

Product:

1 mg/ml in Phosphate buffered saline (PBS) with 0.05% sodium azide, approx. pH 7.2.

Molecular Weight:

~ 33 kDa

Swiss-Prot:

P12236

Purification&Purity:

The antibody was affinity-purified from rabbit antiserum by affinity-chromatography using epitope-specific immunogen and the purity is > 95% (by SDS-PAGE).

Applications:

WB: 1:500~1:1000

IHC: 1:50~1:200

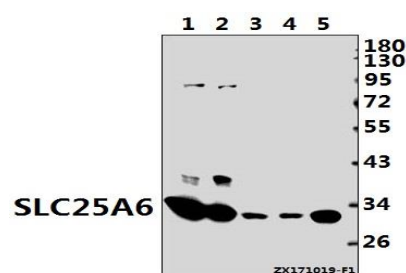
Storage&Stability:

Store at 4 °C short term. Aliquot and store at -20 °C long term. Avoid freeze-thaw cycles.

Specificity:

SLC25A6 (R155) polyclonal antibody detects endogenous levels of SLC25A6 protein.

DATA:



Western blot (WB) analysis of SLC25A6 (R155) pAb at 1:1000 dilution

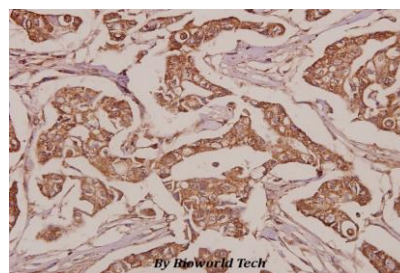
Lane1:H1792 whole cell lysate(40ug)

Lane2:HepG2 whole cell lysate(40ug)

Lane3:The Testis tissue lysate of Mouse(40ug)

Lane4:The Testis tissue lysate of Rat(40ug)

Lane5:HEK293T whole cell lysate(20ug)



Immunohistochemistry (IHC) analyzes of SLC25A6 (R155) pAb in paraffin-embedded human breast carcinoma tissue at 1:50.

Note:

For research use only, not for use in diagnostic procedure.

Bioworld Technology, Inc.

Add: 1660 South Highway 100, Suite 500 St. Louis Park, MN 55416, USA.

Email: info@bioworld.com

Tel: 6123263284

Fax: 6122933841

Bioworld technology, co. Ltd.

Add: No 9, weidi road Qixia District Nanjing, 210046, P. R. China.

Email: info@biogot.com

Tel: 0086-025-68037686

Fax: 0086-025-68035151



PRODUCT DATA SHEET

Bioworld Technology, Inc.

Bioworld Technology, Inc.

Add: 1660 South Highway 100, Suite 500 St. Louis Park,
MN 55416, USA.

Email: info@bioworld.com

Tel: 6123263284

Fax: 6122933841

Bioworld technology, co. Ltd.

Add: No 9, weidi road Qixia District Nanjing, 210046,
P. R. China.

Email: info@biogot.com

Tel: 0086-025-68037686

Fax: 0086-025-68035151