

PSMD11 (R310) polyclonal antibody

Catalog: BS3780

Host: Rabbit

Reactivity: Human, Mouse, Rat

BackGround:

PSMD11 (proteasome (prosome, macropain) 26S subunit, non-ATPase, 11), also known as S9, Rpn6 or p44.5, is a 422 amino acid protein that contains one PCI domain and functions as a regulatory subunit of the 26S proteasome, playing a role in the ATP-dependent degradation of ubiquitinated proteins. The gene encoding PSMD11 maps to human chromosome 17, which comprises over 2.5% of the human genome and encodes over 1,200 genes.

Product:

1 mg/ml in Phosphate buffered saline (PBS) with 0.05% sodium azide, approx. pH 7.2.

Molecular Weight:

~ 46 kDa

Swiss-Prot:

O00231

Purification&Purity:

The antibody was affinity-purified from rabbit antiserum by affinity-chromatography using epitope-specific immunogen and the purity is > 95% (by SDS-PAGE).

Applications:

WB: 1:500~1:1000

IHC: 1:50~1:200

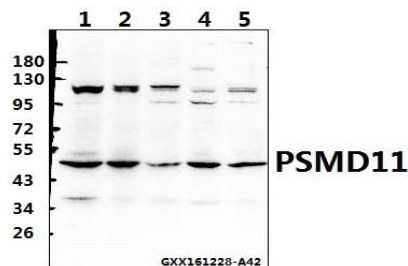
Storage&Stability:

Store at 4 °C short term. Aliquot and store at -20 °C long term. Avoid freeze-thaw cycles.

Specificity:

PSMD11 (R310) polyclonal antibody detects endogenous levels of PSMD11 protein.

DATA:



Western blot (WB) analysis of PSMD11 (R310) polyclonal antibody at 1:500 dilution

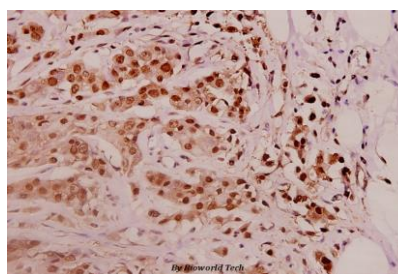
Lane1: HEK293T whole cell lysate (40ug)

Lane2: PANC1 whole cell lysate (40ug)

Lane3: L02 whole cell lysate (40ug)

Lane4: H9C2 whole cell lysate (40ug)

Lane5: CT26 whole cell lysate (40ug)



Immunohistochemistry (IHC) analysis of PSMD11 (R310) pAb in paraffin-embedded human breast carcinoma tissue at 1:100.

Note:

For research use only, not for use in diagnostic procedure.

Bioworld Technology, Inc.

Add: 1660 South Highway 100, Suite 500 St. Louis Park, MN 55416, USA.

Email: info@bioworld.com

Tel: 6123263284

Fax: 6122933841

Bioworld technology, co. Ltd.

Add: No 9, weidi road Qixia District Nanjing, 210046, P. R. China.

Email: info@biogot.com

Tel: 0086-025-68037686

Fax: 0086-025-68035151