

## PAK2 (R186) polyclonal antibody

Catalog: BS3751

Host: Rabbit

Reactivity: Human, Mouse, Rat

### BackGround:

Three isoforms of serine/threonine kinases, designated  $\alpha$ PAK p68,  $\beta$ PAK p65 and  $\gamma$ PAK p62, have been shown to exhibit a high degree of sequence homology with the *S. cerevisiae* kinase Ste 20, involved in pheromone signaling. The  $\alpha$ ,  $\beta$  and  $\gamma$ PAK isoforms complex specifically with Rac1 and Cdc42 in their active GTP-bound state, inhibiting their intrinsic GTPase activity leading to their autophosphorylation. There are eight sites of autophosphorylation on  $\gamma$ PAK, including Ser 19, Ser 141 and Thr 402, and phosphorylation of Ser 141 and Thr 402 is correlated with  $\gamma$ PAK activation. Once phosphorylated and their affinity for Rac/Cdc42 reduced, the PAK isoforms disassociate from the complex to seek downstream substrates.

### Product:

1 mg/ml in Phosphate buffered saline (PBS) with 15 mM sodium azide, approx. pH 7.2.

### Molecular Weight:

~ 60 kDa

### Swiss-Prot:

Q13177

### Purification&Purity:

The antibody was affinity-purified from rabbit antiserum by affinity-chromatography using epitope-specific immunogen and the purity is > 95% (by SDS-PAGE).

### Applications:

WB: 1:500~1:1000

IHC: 1:50~1:200

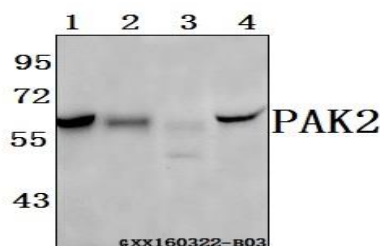
### Storage&Stability:

Store at 4 °C short term. Aliquot and store at -20 °C long term. Avoid freeze-thaw cycles.

### Specificity:

PAK2 (R186) polyclonal antibody detects endogenous levels of PAK2 protein.

### DATA:



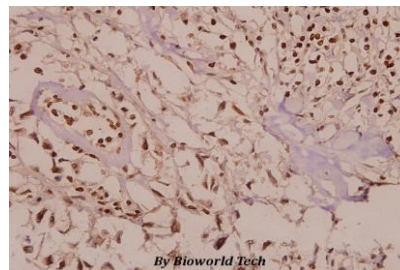
Western blot (WB) analysis of PAK2 (R186) polyclonal antibody at 1:500 dilution

Lane1:Hela whole cell lysate(40ug)

Lane2:The spleen tissue lysate of Mouse(40ug)

Lane3:The spleen tissue lysate of Rat(40ug)

Lane4:SK-OVCAR3 whole cell lysate(40ug)



Immunohistochemistry (IHC) analyzes of PAK2 (R186) pAb in paraffin-embedded human colorectal carcinoma tissue at 1:50.

### Note:

For research use only, not for use in diagnostic procedure.

### Bioworld Technology, Inc.

Add: 1660 South Highway 100, Suite 500 St. Louis Park, MN 55416, USA.

Email: [info@bioworld.com](mailto:info@bioworld.com)

Tel: 6123263284

Fax: 6122933841

### Bioworld technology, co. Ltd.

Add: No 9, weidi road Qixia District Nanjing, 210046, P. R. China.

Email: [info@biogot.com](mailto:info@biogot.com)

Tel: 0086-025-68037686

Fax: 0086-025-68035151