

## NCAM-L1 (R1177) polyclonal antibody

Catalog: BS3723

Host: Rabbit

Reactivity: Human, Mouse, Rat

### BackGround:

The L1CAM gene, which is located in Xq28, is involved in three distinct conditions: 1) HSAS (hydrocephalus-stenosis of the aqueduct of Sylvius); 2) MASA (mental retardation, aphasia, shuffling gait, adductus thumbs); and 3) SPG1 (spastic paraplegia). The L1, neural cell adhesion molecule (L1CAM) also plays an important role in axon growth, fasciculation, neural migration and in mediating neuronal differentiation. Expression of L1 protein is restricted to tissues arising from neuroectoderm.

### Product:

1 mg/ml in Phosphate buffered saline (PBS) with 15 mM sodium azide, approx. pH 7.2.

### Molecular Weight:

~ 140 kDa

### Swiss-Prot:

P32004

### Purification&Purity:

The antibody was affinity-purified from rabbit antiserum by affinity-chromatography using epitope-specific immunogen and the purity is > 95% (by SDS-PAGE).

### Applications:

WB: 1:500~1:1000

IHC: 1:50~1:200

IF: 1:50~1:200

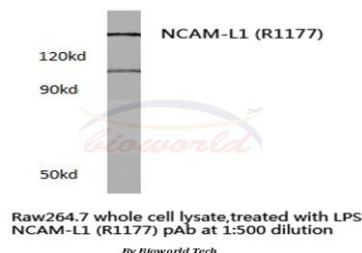
### Storage&Stability:

Store at 4 °C short term. Aliquot and store at -20 °C long term. Avoid freeze-thaw cycles.

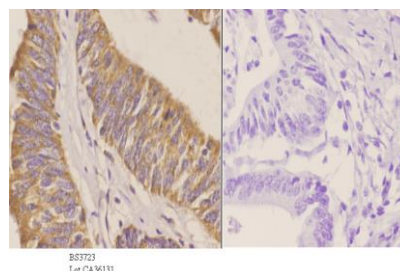
### Specificity:

NCAM-L1 (R1177) polyclonal antibody detects endogenous levels of NCAM-L1 protein.

### DATA:



Western blot (WB) analysis of NCAM-L1 (R1177) polyclonal antibody in extracts from Raw264.7 cells treated with LPS.



Immunohistochemistry (IHC) analyzes of NCAM-L1 (R1177) pAb in paraffin-embedded human colon carcinoma tissue at 1:50, showing cell membrane staining. Negative control (the right) Using PBS instead of primary antibody, secondary antibody is Goat Anti-Rabbit IgG-biotin followed by avidin-peroxidase.

### Note:

For research use only, not for use in diagnostic procedure.

### Bioworld Technology, Inc.

Add: 1660 South Highway 100, Suite 500 St. Louis Park, MN 55416, USA.

Email: [info@bioworld.com](mailto:info@bioworld.com)

Tel: 6123263284

Fax: 6122933841

### Bioworld technology, co. Ltd.

Add: No 9, weidi road Qixia District Nanjing, 210046, P. R. China.

Email: [info@biogot.com](mailto:info@biogot.com)

Tel: 0086-025-68037686

Fax: 0086-025-68035151