

Integrin $\beta 3$ (S778) polyclonal antibody

Catalog: BS3660

Host: Rabbit

Reactivity: Human, Mouse, Rat

BackGround:

Integrins are heterodimers composed of noncovalently associated transmembrane α and β subunits. The 16α and 8β subunits heterodimerize to produce more than 20 different receptors. Most Integrin receptors bind ligands that are components of the extracellular matrix, including Fibronectin, Collagen and Vitronectin. Certain Integrins can also bind to soluble ligands such as Fibrinogen, or to counterreceptors on adjacent cells such as the intracellular adhesion molecules (ICAMs), leading to aggregation of cells. Ligands serve to cross-link or cluster Integrins by binding to adjacent Integrin receptors; both receptor clustering and ligand occupancy are necessary for the activation of Integrin-mediated responses.

Product:

1 mg/ml in Phosphate buffered saline (PBS) with 0.05% sodium azide, approx. pH 7.2.

Molecular Weight:

~ 87, 110 kDa

Swiss-Prot:

P05106

Purification&Purity:

The antibody was affinity-purified from rabbit antiserum by affinity-chromatography using epitope-specific immunogen and the purity is > 95% (by SDS-PAGE).

Applications:

WB: 1:500~1:1000

IHC: 1:50~1:200

Storage&Stability:

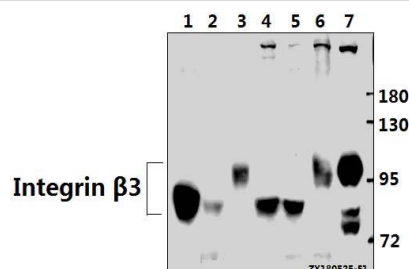
Store at 4 °C short term. Aliquot and store at -20 °C long term. Avoid freeze-thaw cycles.

Specificity:

Integrin $\beta 3$ (S778) polyclonal antibody detects endoge-

nous levels of Integrin $\beta 3$ protein.

DATA:



Western blot (WB) analysis of Integrin $\beta 3$ (S778) pAb at 1:500 dilution

Lane1:BV2 whole cell lysate(40ug)

Lane2:RAW264.7 whole cell lysate(40ug)

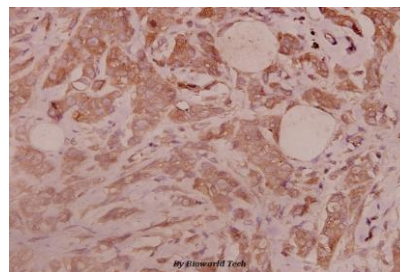
Lane3:The Uterus tissue lysate of Rat(40ug)

Lane4:THP-1 whole cell lysate(40ug)

Lane5:A549 whole cell lysate(40ug)

Lane6:PC3 whole cell lysate(40ug)

Lane7:U-87MG whole cell lysate(40ug)



Immunohistochemistry (IHC) analyzes of Integrin $\beta 3$ (S778) pAb in paraffin-embedded human breast carcinoma tissue at 1:100.

Note:

For research use only, not for use in diagnostic procedure.

Bioworld Technology, Inc.

Add: 1660 South Highway 100, Suite 500 St. Louis Park, MN 55416, USA.

Email: info@bioworld.com

Tel: 6123263284

Fax: 6122933841

Bioworld technology, co. Ltd.

Add: No 9, weidi road Qixia District Nanjing, 210046, P. R. China.

Email: info@biogot.com

Tel: 0086-025-68037686

Fax: 0086-025-68035151