

CPI-17 (K32) polyclonal antibody

Catalog: BS3643

Host: Rabbit

Reactivity: Human, Mouse, Rat

BackGround:

CPI-17 is a phosphorylation-dependent inhibitory protein for smooth muscle myosin phosphate. CPI-17 was originally identified as a PKC-potentiated inhibitory protein of protein phosphatase-1, which is dominantly expressed in smooth muscle. Phosphorylation at Threonine 38, in vitro, by PKC or Rho-kinase enhances the inhibitory potency toward myosin phosphatase. CPI-17 is also phosphorylated at Threonine 38 by protein kinase N and might be involved in the calcium sensitization of smooth muscle contraction as a downstream effector of Rho and/or arachidonic acid. CPI-17 is dually phosphorylated at Serine 12 and Threonine 38 by a MYPT-associated kinase, M110 kinase.

Product:

1 mg/ml in Phosphate buffered saline (PBS) with 0.05% sodium azide, approx. pH 7.2.

Molecular Weight:

~ 22 kDa

Swiss-Prot:

Q96A00

Purification&Purity:

The antibody was affinity-purified from rabbit antiserum by affinity-chromatography using epitope-specific immunogen and the purity is > 95% (by SDS-PAGE).

Applications:

WB: 1:500~1:1000

IHC: 1:50~1:200

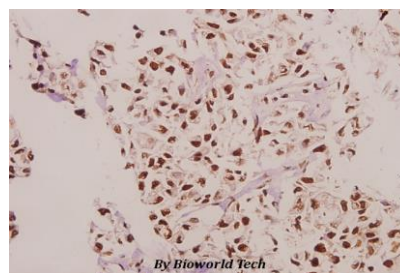
Storage&Stability:

Store at 4 °C short term. Aliquot and store at -20 °C long term. Avoid freeze-thaw cycles.

Specificity:

CPI-17 (K32) polyclonal antibody pAb detects endogenous levels of CPI-17 polyclonal antibody protein.

DATA:



Immunohistochemistry (IHC) analyzes of CPI-17 (K32) pAb in paraffin-embedded human colorectal carcinoma tissue at 1:50.

Note:

For research use only, not for use in diagnostic procedure.

Bioworld Technology, Inc.

Add: 1660 South Highway 100, Suite 500 St. Louis Park, MN 55416, USA.

Email: info@bioworld.com

Tel: 6123263284

Fax: 6122933841

Bioworld technology, co. Ltd.

Add: No 9, weidi road Qixia District Nanjing, 210046, P. R. China.

Email: info@biogot.com

Tel: 0086-025-68037686

Fax: 0086-025-68035151