

## NPY (P94) polyclonal antibody

Catalog: BS3551

Host: Rabbit

Reactivity: Human, Mouse, Rat

### BackGround:

NPY (neuropeptide Y) is a 36 amino acid protein that consists of a polyproline stretch followed by an amphipathic  $\alpha$ -helix. NPY shares a 50% amino acid homology with pancreatic polypeptide gene (PP). NPY is expressed throughout the central and peripheral nervous system, particularly in the deep layers of the cortex and smaller cell bodies in the white matter. NPY interacts with the Y-receptor family of G protein-coupled receptors. NPY interacts with NPY receptor Y1 to increase corticotropin levels and decrease noradrenaline levels in the hypothalamus. Through interactions in the hypothalamus, NPY plays important roles in the regulation of energy balance by stimulating food intake. NPY favors energy storage by increasing lipoprotein lipase activity in white adipose tissue.

### Product:

1 mg/ml in Phosphate buffered saline (PBS) with 0.05% sodium azide, approx. pH 7.2.

### Molecular Weight:

~ 11 kDa

### Swiss-Prot:

P01303

### Purification&Purity:

The antibody was affinity-purified from rabbit antiserum by affinity-chromatography using epitope-specific im-

munogen and the purity is > 95% (by SDS-PAGE).

### Applications:

IHC: 1:50~1:200

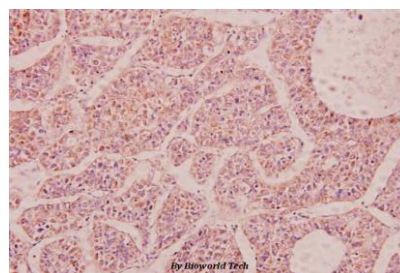
### Storage&Stability:

Store at 4 °C short term. Aliquot and store at -20 °C long term. Avoid freeze-thaw cycles.

### Specificity:

NPY (P94) polyclonal antibody detects endogenous levels of NPY protein.

### DATA:



Immunohistochemistry (IHC) analyzes of NPY (P94) pAb in paraffin-embedded human liver carcinoma tissue at 1:100.

### Note:

For research use only, not for use in diagnostic procedure.

### Bioworld Technology, Inc.

Add: 1660 South Highway 100, Suite 500 St. Louis Park, MN 55416, USA.

Email: [info@bioworld.com](mailto:info@bioworld.com)

Tel: 6123263284

Fax: 6122933841

### Bioworld technology, co. Ltd.

Add: No 9, weidi road Qixia District Nanjing, 210046, P. R. China.

Email: [info@biogot.com](mailto:info@biogot.com)

Tel: 0086-025-68037686

Fax: 0086-025-68035151