

Lamin B1 (L75) polyclonal antibody

Catalog: BS3547

Host: Rabbit

Reactivity: Human, Mouse, Rat

BackGround:

An important part of the nucleus is formed by nuclear lamina. Nuclear lamins form a network of filaments at the nucleoplasmic site of the nuclear membrane. Two main subtypes of nuclear lamins can be distinguished, i.e. A type lamins and B type lamins. The A type lamins comprise a set of three proteins arising from the same gene by alternative splicing, i.e. lamin A, lamin C and lamin Ad-e110, while the B-type lamins include two proteins arising from two distinct genes, i.e. lamin B1 and lamin B2. The nuclear lamins comprise a unique subclass of the intermediate filament protein family. They share a molecular domain organisation with the other intermediate filament proteins in that they are fibrous molecules that have an aminoterminal globular head, a central rod of alpha helices and a carboxy terminal globular domain. Many biochemical and molecular features of lamins have been studied, but their functions remain still largely undetermined. One of the functions ascribed to the lamina is the maintenance of the structural integrity of the nucleus.

Product:

1 mg/ml in Phosphate buffered saline (PBS) with 0.05% sodium azide, approx. pH 7.2.

Molecular Weight:

~ 68 kDa

Swiss-Prot:

P20700

Purification&Purity:

The antibody was affinity-purified from rabbit antiserum by affinity-chromatography using epitope-specific immunogen and the purity is > 95% (by SDS-PAGE).

Applications:

WB: 1:500~1:1000

IHC: 1:50~1:200

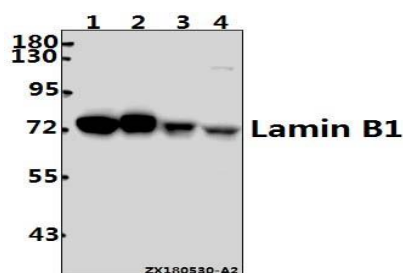
Storage&Stability:

Store at 4 °C short term. Aliquot and store at -20 °C long term. Avoid freeze-thaw cycles.

Specificity:

Lamin B1 (L75) polyclonal antibody detects endogenous levels of Lamin B1 protein.

DATA:



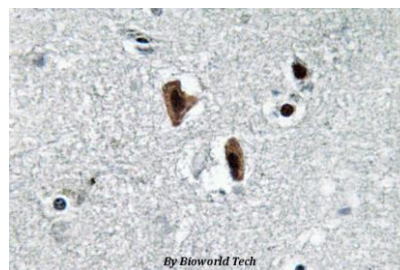
Western blot (WB) analysis of Lamin B1 (L75) pAb at 1:500 dilution

Lane1:HEK293T whole cell lysate(20ug)

Lane2:H1792 whole cell lysate(20ug)

Lane3:The Kidney tissue lysate of Rat(40ug)

Lane4:The Kidney tissue lysate of Mouse(40ug)



Immunohistochemistry (IHC) analyzes of Lamin B1 (L75) pAb in paraffin-embedded human brain tissue.

Note:

For research use only, not for use in diagnostic procedure.

Bioworld Technology, Inc.

Add: 1660 South Highway 100, Suite 500 St. Louis Park, MN 55416, USA.

Email: info@bioworld.com

Tel: 6123263284

Fax: 6122933841

Bioworld technology, co. Ltd.

Add: No 9, weidi road Qixia District Nanjing, 210046, P. R. China.

Email: info@biogot.com

Tel: 0086-025-68037686

Fax: 0086-025-68035151