

Cathepsin B (N217) polyclonal antibody

Catalog: BS3536

Host: Rabbit

Reactivity: Human, Mouse, Rat

BackGround:

The cathepsin family of proteolytic enzymes contains several diverse classes of proteases. The cysteine protease class comprises cathepsins B, L, H, K, S, and O. The aspartyl protease class is composed of cathepsins D and E. Cathepsin G is in the serine protease class. Most cathepsins are lysosomal and each is involved in cellular metabolism, participating in various events such as peptide biosynthesis and protein degradation. Cathepsin B is expressed in luminal epithelial cells, indicating that cathepsin B is a marker for secretory cell death.

Product:

1 mg/ml in Phosphate buffered saline (PBS) with 0.05% sodium azide, approx. pH 7.2.

Molecular Weight:

~ 36 kDa

Swiss-Prot:

P07858

Purification&Purity:

The antibody was affinity-purified from rabbit antiserum by affinity-chromatography using epitope-specific immunogen and the purity is > 95% (by SDS-PAGE).

Applications:

WB: 1:500~1:1000

IHC: 1:50~1:200

Storage&Stability:

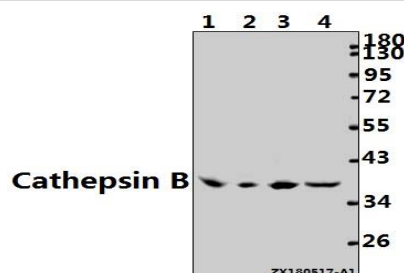
Store at 4 °C short term. Aliquot and store at -20 °C long term. Avoid freeze-thaw cycles.

Specificity:

Cathepsin B (N217) polyclonal antibody detects endoge-

nous levels of Cathepsin B protein.

DATA:



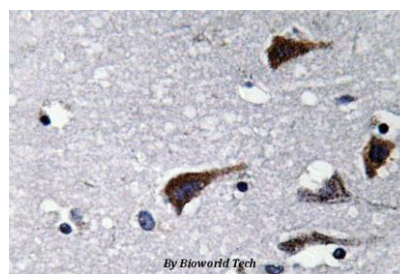
Western blot (WB) analysis of Cathepsin B (N217) pAb at 1:2000 dilution

Lane1: The Embryo tissue lysate of Mouse(40ug)

Lane2: The Lung tissue lysate of Rat(40ug)

Lane3: HCT116 whole cell lysate(40ug)

Lane4: A549 whole cell lysate(40ug)



Immunohistochemistry (IHC) analyzes of Cathepsin B (N217) pAb in paraffin-embedded human brain tissue.

Note:

For research use only, not for use in diagnostic procedure.

Bioworld Technology, Inc.

Add: 1660 South Highway 100, Suite 500 St. Louis Park, MN 55416, USA.

Email: info@bioworld.com

Tel: 6123263284

Fax: 6122933841

Bioworld technology, co. Ltd.

Add: No 9, weidi road Qixia District Nanjing, 210046, P. R. China.

Email: info@biogot.com

Tel: 0086-025-68037686

Fax: 0086-025-68035151