

TAT (E304) polyclonal antibody

Catalog: BS3522

Host: Rabbit

Reactivity: Human, Mouse, Rat

BackGround:

TAT (tyrosine aminotransferase) is a 454 amino acid protein that localizes to mitochondria and belongs to the class-I pyridoxal-phosphate-dependent aminotransferase family. Existing as a homodimer, TAT uses pyridoxal phosphate as a cofactor to catalyze the conversion of L-tyrosine into p-hydroxyphenylpyruvate, a reaction that is important in amino acid degradation. Defects in the gene encoding TAT are the cause of tyrosinemia type 2 (TYRO2), an inborn error of metabolism that is associated with elevated levels of tyrosine in blood and urine and is characterized by palmoplantar keratosis, painful corneal ulcers and mental retardation. The gene encoding TAT maps to human chromosome 16, which encodes over 900 genes and comprises nearly 3% of the human genome.

Product:

1 mg/ml in Phosphate buffered saline (PBS) with 0.05% sodium azide, approx. pH 7.2.

Molecular Weight:

~ 51 kDa

Swiss-Prot:

P17735

Purification&Purity:

The antibody was affinity-purified from rabbit antiserum by affinity-chromatography using epitope-specific im-

munogen and the purity is > 95% (by SDS-PAGE).

Applications:

IHC:1:50~1:200

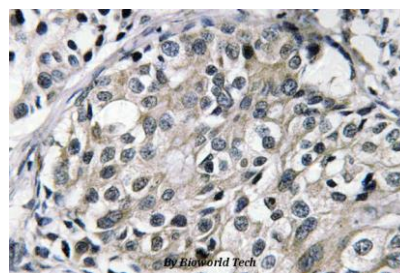
Storage&Stability:

Store at 4 °C short term. Aliquot and store at -20 °C long term. Avoid freeze-thaw cycles.

Specificity:

TAT (E304) polyclonal antibody detects endogenous levels of TAT protein.

DATA:



Immunohistochemistry (IHC) analyzes of TAT (E304) pAb in paraffin-embedded human breast carcinoma tissue.

Note:

For research use only, not for use in diagnostic procedure.

Bioworld Technology, Inc.

Add: 1660 South Highway 100, Suite 500 St. Louis Park, MN 55416, USA.

Email: info@bioworld.com

Tel: 6123263284

Fax: 6122933841

Bioworld technology, co. Ltd.

Add: No 9, weidi road Qixia District Nanjing, 210046, P. R. China.

Email: info@biogot.com

Tel: 0086-025-68037686

Fax: 0086-025-68035151