

Pax-1 (T367) polyclonal antibody

Catalog: BS3493

Host: Rabbit

Reactivity: Human, Mouse, Rat

BackGround:

Pax-1 is a sequence-specific DNA binding-protein with transcriptional activating properties. The expression pattern of Pax-1 during mouse embryogenesis indicates that it may play an important role in the development of the vertebral column. The autosomal recessive mutation 'undulated' (un) in the mouse exhibits vertebral anomalies along the entire rostrocaudal axis and is associated with a point mutation (G-to-A transition) at position 15 leading to a gly-to-ser replacement in a highly conserved region of the paired box of Pax-1. Pax-1 is required for the normal development of these three skeletal elements: the vertebral column, sternum, and scapula. Mice who are doubly heterozygous for the mutants 'undulated' and 'Patch' have a phenotype reminiscent of an extreme form of spina bifida occulta in humans.

Product:

1 mg/ml in Phosphate buffered saline (PBS) with 0.05% sodium azide, approx. pH 7.2.

Molecular Weight:

~ 55 kDa

Swiss-Prot:

P15863

Purification&Purity:

The antibody was affinity-purified from rabbit antiserum by affinity-chromatography using epitope-specific im-

munogen and the purity is > 95% (by SDS-PAGE).

Applications:

IHC: 1:50~1:200

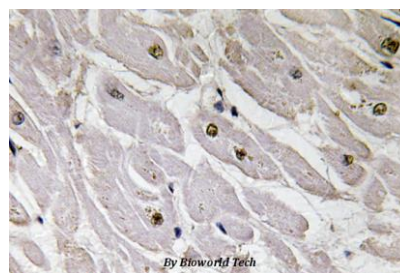
Storage&Stability:

Store at 4 °C short term. Aliquot and store at -20 °C long term. Avoid freeze-thaw cycles.

Specificity:

Pax-1 (T367) polyclonal antibody detects endogenous levels of Pax-1 protein.

DATA:



Immunohistochemistry (IHC) analyzes of Pax-1 (T367) pAb in paraffin-embedded human heart tissue.

Note:

For research use only, not for use in diagnostic procedure.

Bioworld Technology, Inc.

Add: 1660 South Highway 100, Suite 500 St. Louis Park, MN 55416, USA.

Email: info@bioworld.com

Tel: 6123263284

Fax: 6122933841

Bioworld technology, co. Ltd.

Add: No 9, weidi road Qixia District Nanjing, 210046, P. R. China.

Email: info@biogot.com

Tel: 0086-025-68037686

Fax: 0086-025-68035151