

IL-5 (S92) polyclonal antibody

Catalog: BS3471

Host: Rabbit

Reactivity: Human, Mouse, Rat

BackGround:

Interleukin 5 (IL-5) is a soluble T cell-derived factor, also known as T cellreplacing factor (TRF), that induces B cell and eosinophil growth and differentiation. IL-5 exerts its biological activity through the IL-5 receptor (IL-5R), which is composed of two chains: an α chain that binds IL-5 with low affinity and a β chain that does not bind IL-5, but together with the IL-5 α chain, constitutes the high affinity IL-5 receptor. The cytoplasmic domain of both the α and β chains is essential for signal transduction. Specifically, the membrane-proximal proline-rich sequence of the cytoplasmic domain of the IL-5R receptor α subunit, IL-5R α , is critical for the IL-5 induced proliferative response, expression of nuclear proto-oncogenes and tyrosine phosphorylation of cellular proteins, such as JAK1 and JAK2.

Product:

1 mg/ml in Phosphate buffered saline (PBS) with 0.05% sodium azide, approx. pH 7.2.

Molecular Weight:

~ 15, 45 kDa

Swiss-Prot:

P05113

Purification&Purity:

The antibody was affinity-purified from rabbit antiserum by affinity-chromatography using epitope-specific im-

munogen and the purity is > 95% (by SDS-PAGE).

Applications:

WB: 1:500~1:1000

IHC: 1:50~1:200

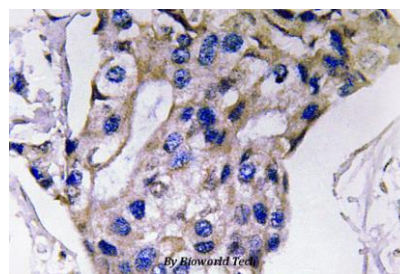
Storage&Stability:

Store at 4 °C short term. Aliquot and store at -20 °C long term. Avoid freeze-thaw cycles.

Specificity:

IL-5 (S92) polyclonal antibody detects endogenous levels of IL-5 protein.

DATA:



Immunohistochemistry (IHC) analyzes of IL-5 (S92) pAb in paraffin-embedded human breast carcinoma tissue.

Note:

For research use only, not for use in diagnostic procedure.

Bioworld Technology, Inc.

Add: 1660 South Highway 100, Suite 500 St. Louis Park, MN 55416, USA.

Email: info@bioworld.com

Tel: 6123263284

Fax: 6122933841

Bioworld technology, co. Ltd.

Add: No 9, weidi road Qixia District Nanjing, 210046, P. R. China.

Email: info@biogot.com

Tel: 0086-025-68037686

Fax: 0086-025-68035151