

## Integrin $\alpha 3$ polyclonal antibody

Catalog: BS3437

Host: Rabbit

Reactivity: Human, Rat, Mouse

### BackGround:

Integrin  $\alpha 3/\beta 1$  is a receptor for fibronectin, laminin, collagen, epiligrin, thrombospondin and CSPG4. Integrin  $\alpha 3/\beta 1$  provides a docking site for FAP (seprase) at invadopodia plasma membranes in a collagen-dependent manner and hence may participate in the adhesion, formation of invadopodia and matrix degradation processes, promoting cell invasion.  $\alpha 3/\beta 1$  may mediate with LGALS3 the stimulation by CSPG4 of endothelial cells migration.

### Product:

Rabbit IgG, 1mg/ml in PBS with 0.02% sodium azide, 50% glycerol, pH7.2.

### Molecular Weight:

~ 125 kDa

### Swiss-Prot:

P26006

### Purification&Purity:

The antibody was affinity-purified from rabbit antiserum by affinity-chromatography using epitope-specific immunogen and the purity is > 95% (by SDS-PAGE).

### Applications:

WB: 1:500~1:1000

IHC: 1:50~1:100

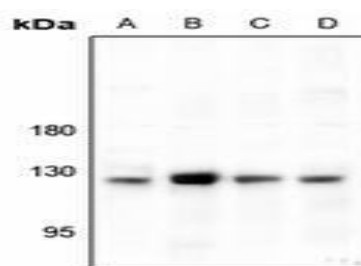
### Storage&Stability:

Store at 4 °C short term. Aliquot and store at -20 °C long term. Avoid freeze-thaw cycles.

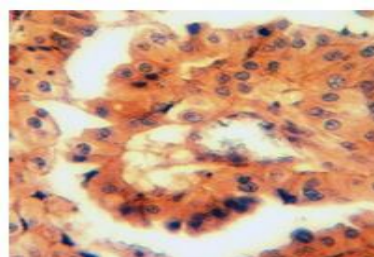
### Specificity:

Integrin  $\alpha 3$  polyclonal antibody detects endogenous levels of Integrin  $\alpha 3$  protein.

### DATA:



Western blot analysis of Integrin  $\alpha 3$  expression in HepG2 (A), AML12 (B), PC12 (C), A549 (D) whole cell lysates.



Immunohistochemical analysis of Integrin  $\alpha 3$  staining in human lung cancer formalin fixed paraffin embedded tissue section.

### Note:

For research use only, not for use in diagnostic procedure.

### Bioworld Technology, Inc.

Add: 1660 South Highway 100, Suite 500 St. Louis Park, MN 55416, USA.

Email: [info@bioworld.com](mailto:info@bioworld.com)

Tel: 6123263284

Fax: 6122933841

### Bioworld technology, co. Ltd.

Add: No 9, weidi road Qixia District Nanjing, 210046, P. R. China.

Email: [info@biogot.com](mailto:info@biogot.com)

Tel: 0086-025-68037686

Fax: 0086-025-68035151