

POLR3A (P68) polyclonal antibody

Catalog: BS3292

Host: Rabbit

Reactivity: Human, Mouse, Rat

BackGround:

POLR3A (polymerase (RNA) III (DNA directed) polypeptide A), also known as RPC1 or RPC155, is a 1,390 amino acid protein that localizes to the nucleus and belongs to the RNA polymerase β chain family. Existing as the largest and catalytic core component of Pol III, POLR3A functions as a DNA-dependent RNA polymerase that catalyzes the conversion of a nucleoside triphosphate into a diphosphate, thereby transcribing DNA into RNA. The gene encoding POLR3A maps to human chromosome 10, which houses over 1,200 genes and comprises nearly 4.5% of the human genome.

Product:

1 mg/ml in Phosphate buffered saline (PBS) with 0.05% sodium azide, approx. pH 7.2.

Molecular Weight:

~ 156 kDa

Swiss-Prot:

O14802

Purification&Purity:

The antibody was affinity-purified from rabbit antiserum by affinity-chromatography using epitope-specific immunogen and the purity is > 95% (by SDS-PAGE).

Applications:

WB: 1:500~1:1000

IHC: 1:50~1:200

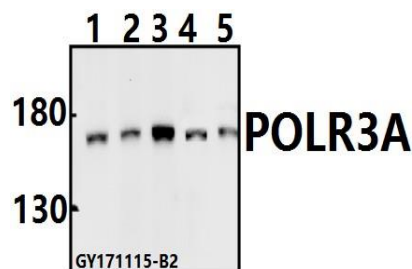
Storage&Stability:

Store at 4 °C short term. Aliquot and store at -20 °C long term. Avoid freeze-thaw cycles.

Specificity:

POLR3A (P68) polyclonal antibody detects endogenous levels of POLR3A protein.

DATA:



Western blot (WB) analysis of POLR3A (P68) pAb at 1:500 dilution

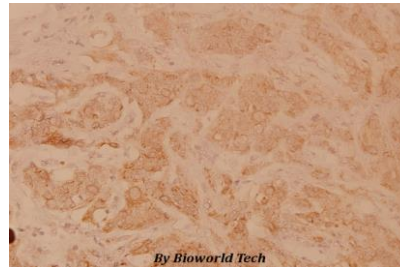
Lane1:PC3 whole cell lysate(40ug)

Lane2:Hela whole cell lysate(40ug)

Lane3:K562 whole cell lysate(40ug)

Lane4:C6 whole cell lysate(40ug)

Lane5:BV2 whole cell lysate(40ug)



Immunohistochemistry (IHC) analyzes of POLR3A (P68) pAb in paraffin-embedded human breast carcinoma tissue at 1:100.

Note:

For research use only, not for use in diagnostic procedure.

Bioworld Technology, Inc.

Add: 1660 South Highway 100, Suite 500 St. Louis Park, MN 55416, USA.

Email: info@bioworld.com

Tel: 6123263284

Fax: 6122933841

Bioworld technology, co. Ltd.

Add: No 9, weidi road Qixia District Nanjing, 210046, P. R. China.

Email: info@biogot.com

Tel: 0086-025-68037686

Fax: 0086-025-68035151