

## CEP70 (L276) polyclonal antibody

Catalog: BS3280

Host: Rabbit

Reactivity: Human, Mouse, Rat

### BackGround:

Centrosomal protein of 70 kDa, plays a role in the organization of both preexisting and nascent microtubules in interphase cells. During mitosis, required for the organization and orientation of the mitotic spindle.

### Product:

1 mg/ml in Phosphate buffered saline (PBS) with 0.05% sodium azide, approx. pH 7.3.

### Molecular Weight:

~ 70 kDa

### Swiss-Prot:

Q8NHQ1

### Purification&Purity:

The antibody was affinity-purified from rabbit antiserum by affinity-chromatography using epitope-specific immunogen and the purity is > 95% (by SDS-PAGE).

### Applications:

WB: 1:500~1:1000

### Storage&Stability:

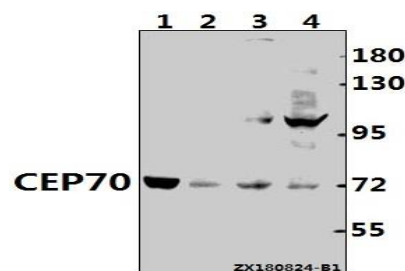
Store at 4 °C short term. Aliquot and store at -20 °C long

term. Avoid freeze-thaw cycles.

### Specificity:

CEP70 pAb detects endogenous levels of CEP70 protein.

### DATA:



Western blot (WB) analysis of CEP70 (L276) Antibody at 1:500 dilution

Lane1: The Testis tissue lysate of Rat (30ug)

Lane2: The Brain tissue lysate of Mouse (40ug)

Lane3: SGC7901 whole cell lysate (40ug)

Lane4: HEK293T whole cell lysate (40ug)

### Note:

For research use only, not for use in diagnostic procedure.

### Bioworld Technology, Inc.

Add: 1660 South Highway 100, Suite 500 St. Louis Park, MN 55416, USA.

Email: [info@bioworld.com](mailto:info@bioworld.com)

Tel: 6123263284

Fax: 6122933841

### Bioworld technology, co. Ltd.

Add: No 9, weidi road Qixia District Nanjing, 210046, P. R. China.

Email: [info@biogol.com](mailto:info@biogol.com)

Tel: 0086-025-68037686

Fax: 0086-025-68035151