

PD2R (E301) polyclonal antibody

Catalog: BS3239

Host: Rabbit

Reactivity: Human, Mouse, Rat

BackGround:

The prostaglandin D2 receptor is a member of the G-protein-coupled receptor (GPCR) family (subfamily: prostanoid). It has been shown to function as a prostanoid DP receptor. Its activity is mainly mediated by G-S proteins that stimulate adenylate cyclase resulting in an elevation of intracellular cAMP and Ca²⁺. Knockout studies in mice suggest that the ligand of this receptor, prostaglandin D2 (PGD2), functions as a mast cell-derived mediator to trigger asthmatic responses. Prostaglandin D2 receptor has been reported to be expressed in human small intestine, colon (goblet cells), eye, and eosinophils. ESTs have been isolated from human brain libraries.

Product:

1 mg/ml in Phosphate buffered saline (PBS) with 0.05% sodium azide, approx. pH 7.2.

Molecular Weight:

~ 40 kDa

Swiss-Prot:

Q13258

Purification&Purity:

The antibody was affinity-purified from rabbit antiserum by affinity-chromatography using epitope-specific immunogen and the purity is > 95% (by SDS-PAGE).

Applications:

WB: 1:500~1:1000

IF: 1:50~1:200

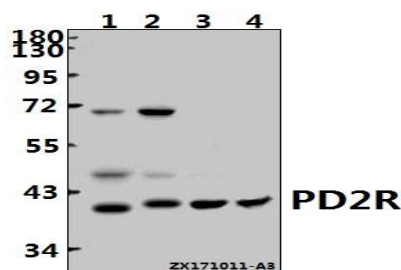
Storage&Stability:

Store at 4 °C short term. Aliquot and store at -20 °C long term. Avoid freeze-thaw cycles.

Specificity:

PD2R (E301) polyclonal antibody detects endogenous levels of PD2R protein.

DATA:



Western blot (WB) analysis of PD2R (E301) pAb at 1:1000 dilution

Lane1: The Eye tissue lysate of Mouse (40ug)

Lane2: The Eye tissue lysate of Rat (40ug)

Lane3: HCT116 whole cell lysate (40ug)

Lane4: HEK293T whole cell lysate (40ug)

Note:

For research use only, not for use in diagnostic procedure.

Bioworld Technology, Inc.

Add: 1660 South Highway 100, Suite 500 St. Louis Park, MN 55416, USA.

Email: info@bioworld.com

Tel: 6123263284

Fax: 6122933841

Bioworld technology, co. Ltd.

Add: No 9, weidi road Qixia District Nanjing, 210046, P. R. China.

Email: info@biogol.com

Tel: 0086-025-68037686

Fax: 0086-025-68035151