

CCK-BR (L54) polyclonal antibody

Catalog: BS3159

Host: Rabbit

Reactivity: Human, Mouse, Rat

BackGround:

CCKBR is a G protein coupled receptor for gastrin and cholecystokinin (CCK), regulatory peptides of the brain and gastrointestinal tract. This protein is a type B gastrin receptor, which has a high affinity for both sulfated and nonsulfated CCK analogs and is found principally in the central nervous system and the gastrointestinal tract. A misspliced transcript variant including an intron has been observed in cells from colorectal and pancreatic tumors. CCKBR is most abundant in brain and stomach but it can also be found in colon, pancreas, thyroid, and various cancers.

Product:

1 mg/ml in Phosphate buffered saline (PBS) with 15 mM sodium azide, approx. pH 7.2.

Molecular Weight:

~ 48 kDa

Swiss-Prot:

P32239

Purification&Purity:

The antibody was affinity-purified from rabbit antiserum by affinity-chromatography using epitope-specific immunogen and the purity is > 95% (by SDS-PAGE).

Applications:

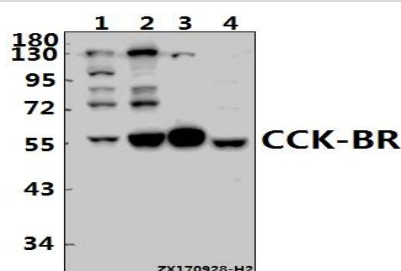
WB: 1:500~1:1000

Storage&Stability:

Store at 4 °C short term. Aliquot and store at -20 °C long term. Avoid freeze-thaw cycles.

Specificity:

CCK-BR (L54) polyclonal antibody detects endogenous levels of CCK-BR protein.

DATA:

Western blot (WB) analysis of CCK-BR (L54) pAb at 1:500 dilution

Lane1: Panc1 whole cell lysate(40ug)

Lane2: SGC7901 whole cell lysate(40ug)

Lane3: The Brain tissue lysate of Mouse(20ug)

Lane4: The Brain tissue lysate of Rat(40ug)

Note:

For research use only, not for use in diagnostic procedure.

Bioworld Technology, Inc.

Add: 1660 South Highway 100, Suite 500 St. Louis Park, MN 55416, USA.

Email: info@bioworld.com

Tel: 6123263284

Fax: 6122933841

Bioworld technology, co. Ltd.

Add: No 9, weidi road Qixia District Nanjing, 210046, P. R. China.

Email: info@biogot.com

Tel: 0086-025-68037686

Fax: 0086-025-68035151