

ACSL6 (D531) polyclonal antibody

Catalog: BS3140

Host: Rabbit

Reactivity: Human, Mouse, Rat

Background:

Acyl-CoA synthetases, also known as long-chain fatty-acid CoA synthases (FACL) or Palmitoyl-CoA ligases, include ACSL1-6, which are all single-pass membrane proteins localizing to the mitochondrion, microsome or peroxisome. ACSL proteins are important for synthesis of cellular lipids and for β -oxidation degradation. Specifically, ACSL proteins catalyze the activation of long-chain fatty acids to acyl-CoAs, which can be metabolized to form CO₂, triacylglycerol (TAG), phospholipids (PL) and cholesteryl esters (CE). ACSL6 has been shown to be an ETV6 fusion partner gene in a recurrent t(5;12) (q31;p13) translocation in a patient with refractory anemia with excess blasts (RAEB) with basophilia, a patient with acute myelogenous leukemia (AML) with eosinophilia, and a patient with acute eosinophilic leukemia (AEL).

Product:

1 mg/ml in Phosphate buffered saline (PBS) with 0.05% sodium azide, approx. pH 7.2.

Molecular Weight:

~ 78 kDa

Swiss-Prot:

Q9UKU0

Purification&Purity:

The antibody was affinity-purified from rabbit antiserum by affinity-chromatography using epitope-specific im-

munogen and the purity is > 95% (by SDS-PAGE).

Applications:

IHC: 1:50~1:200

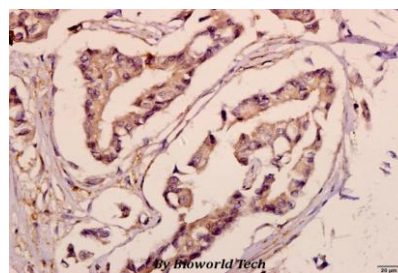
Storage&Stability:

Store at 4 °C short term. Aliquot and store at -20 °C long term. Avoid freeze-thaw cycles.

Specificity:

ACSL6 (D531) polyclonal antibody detects endogenous levels of ACSL6 protein.

DATA:



Immunohistochemistry (IHC) analyzes of ACSL6 (D531) pAb in paraffin-embedded human breast carcinoma tissue at 1:50.

Note:

For research use only, not for use in diagnostic procedure.

Bioworld Technology, Inc.

Add: 1660 South Highway 100, Suite 500 St. Louis Park, MN 55416, USA.

Email: info@bioworld.com

Tel: 6123263284

Fax: 6122933841

Bioworld technology, co. Ltd.

Add: No 9, weidi road Qixia District Nanjing, 210046, P. R. China.

Email: info@biogol.com

Tel: 0086-025-68037686

Fax: 0086-025-68035151